



WESTWARD PARTS

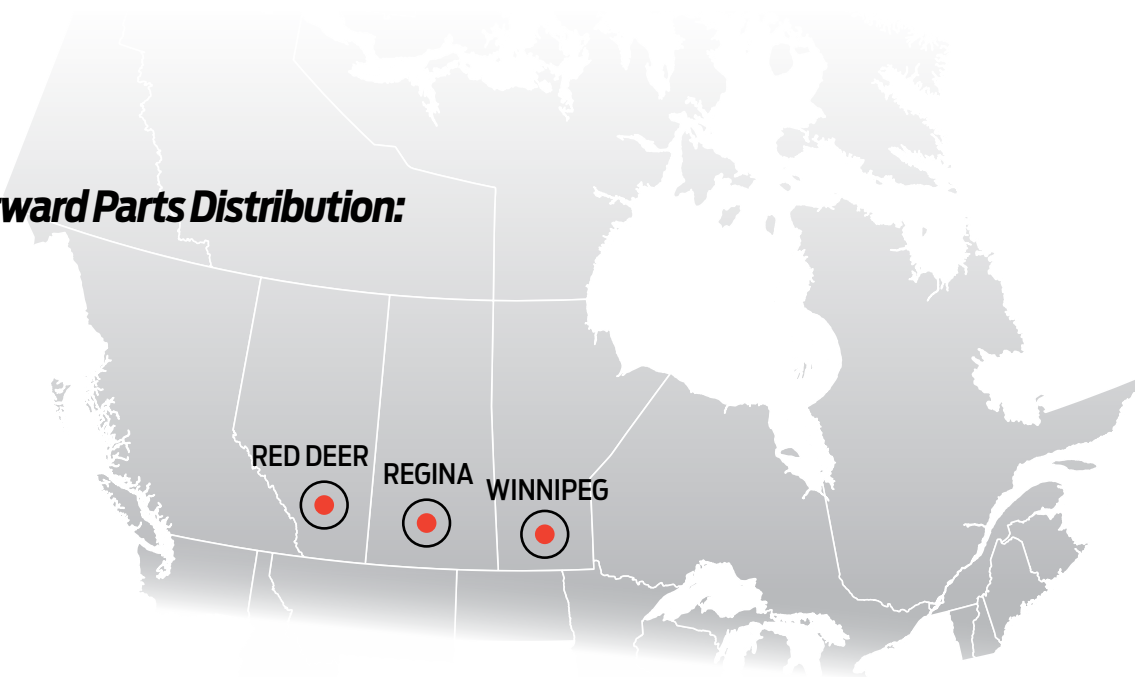


2024 SPRAYER CATALOGUE



Westward has the part! That's our commitment to you, and that's what sets us apart. Westward Parts has over 50 years of expertise with all makes of agricultural parts, sprayer parts, sprayers, as well as ground maintenance and estate equipment. Our Canadian dealers are served from three different warehouse locations across the country. Westward Parts offers our dealers the most comprehensive product portfolio and exclusive product offerings. And it will all be delivered on time, with an enjoyable customer service experience that won't let you down.

Westward Parts Distribution:



Red Deer, Alberta
6517 - 67 Street
Red Deer, AB T4P 1A3
Fax: 1-800-661-4508

Regina, Saskatchewan
201 Henderson Drive
Regina, SK S4N 7E2
Fax: 1-800-721-2977

Winnipeg, Manitoba
1435 St. James Street
Winnipeg, MB R3H 0W9
Fax: 1-800-257-8338

1-888-937-7278
WWW.WESTWARDPARTS.COM

A		
Accessories, Tank	69	
Additives, Tank	80	
ATV Mounted Sprayers	27-33, 52-53	
B		
Boom Assemblies	71-73	
Broadcast Nozzles	71-74, 78	
C		
Caps, Nozzle	69-70	
D		
Dry Material Spreader, ATV	56-57	
Dry Material Spreader, ATV Pull Behind	58-59	
Dry Material Spreader, 3 Point Hitch	60	
Dry Material Spreader, Truck Hitch	56	
E		
Electric Diaphragm Pump (12 Volt)	75-76	
F		
Foam For Marker	80	
G		
Gasoline Engine Skid Sprayers	47-50	
H		
Hitch (3 Point) Sprayers	38-46	
Hose Barbs	70	
Hose Reels	79	
K		
Kits, Spray Wands	77-78	
L		
Lawn Attachments	61-67	
Lawn Rollers	61	
M		
Manifolds	70	
Multifunction Sprayer	4	
Multi-Lid	74	
P		
Packaged Parts	69-70	
Pro Series Spot Sprayer	51	
Pro Series ATV Sprayers	52-53	
Pro Series 3PT Sprayer	54	
Pro Series Trailer Sprayers	55	
Pump Repair Kits	69-70	
Pumps	75-76	
R		
Remote Control Kit (Remote Switch)	74	
Roller, Lawn	61	
Row Crop Sprayers	44-46	
S		
Skid Sprayers (Lawn & Garden)	47	
Skid Mounted Sprayers (Ag.)	48-50	
Skid Mounted Commercial Sprayers	48-50	
Spot Sprayers	4-17, 51	
Spray Wands	5, 77-78	
Spray Wands & Parts	5, 70, 77-78	
Spray Wand Kits	77-78	
Spray Wand, Lithium Ion Powered	5, 78	
Spraying Information	85-86	
T		
Tank Accessories	69, 75	
Tank Cleaning Agent	80	
Tank Repair Parts	69	
Three Point Hitch Sprayers	38-46, 54	
Trailer Carts	64-67	
Trailer Type Sprayers Lawn & Garden	18-26, 55	
U		
UTV Sprayer	34-37	
W		
Weights & Measurements	81-82	
Wheeled Spot Sprayers	4, 6-7	



4 GALLON PORTABLE SPOT SPRAYER



BEST IN CLASS PUMP

- Rechargeable Lithium Ion Spray Wand
- 65 Minute Run Time / Charge
- 10 ft Vertical Spray, 20 ft Horizontal Spray



REINFORCED STEEL HANDLE

- Durable Build
- Premium Materials

4 GALLON TANK

SUPERIOR TANK STRENGTH

- High Density Polyethylene Tank with UV Stabilizer
- Delivers Years of Dependable Use



BACKPACK STRAPS

- Fully Adjustable Strap Length
- Attached To Tank For Backpack Carry



RECHARGABLE BATTERY

- Rechargeable Lithium Ion Battery
- 3.6V Charger Included
- 2.5 Hour Recharge Time



LAWN GUARD

BY



LWN-GRD-4

Sprayer Weight	Water Weight	Sprayer W/Water Weight
20 lbs	33 lbs	53 lbs

Model #	Code #	Tank Size	Shipping Weight	Carton Size	Shipping Class	Cubic Feet	Ship Via	UPC Code
LWN-GRD-4	5303079	4 Gallon	11#	14 x 11 x 23	150	2.1	GROUND	733029119995





LITHIUM ION POWERED SPRAY WAND PUMP



BEST IN CLASS PUMP

- Rechargeable Lithium Ion Spray Wand
- 65 Minute Run Time / Charge
- Includes 3.6V Charger
- 10 ft Vertical Spray, 20 ft Horizontal Spray

NO MORE PUMPING

**Easily Upgrade Your Pump-Up
Sprayer To A Lithium Ion
Powered Sprayer For
Effortless Spraying**



LAWN GUARD



SPRAYER & HOSE
NOT INCLUDED

Model #	Code #	UPC Code
7772105	7772105	733029120212



5 GALLON WHEELED SPOT SPRAYER



BEST IN CLASS PUMP

- 1.2 GPM High Performance 12 Volt Pump
- Maximum Pressure Of 60 PSI
- Pressure Switch Turns Pump On & Off
- Self Priming
- Can Run Dry Without Damage
- Chemical Resistant Components
- Fan Cooled To Promote Longevity & Efficiency

5 GALLON TANK

SUPERIOR TANK STRENGTH

- High Density Polyethylene Tank with UV Stabilizer
- Delivers Years of Dependable Use

RECHARGABLE PORTABLE POWER

12 Volt Rechargeable Battery with Charger.



LEVER GRIP SPRAY WAND

- Up To 25 Feet Horizontal Spray
- Up To 15 Feet Vertical Spray
- Adjustable Spray Pattern



15 FEET OF 3/8 INCH HOSE

- Chemical Resistant Rubber Hose
- Easy To Wrap For Storage
- Less Prone To Kinking

LG-5-P

Sprayer Weight	Water Weight	Sprayer W/Water Weight
36 lbs	42 lbs	78 lbs

Model #	Code #	Tank Size	Shipping Weight	Carton Size	Shipping Class	Cubic Feet	Ship Via	UPC Code
LG-5-P	5302165	5 Gallon	33#	22 x 17 x 22	150	4.8	GROUND	733029002211



8 GALLON WHEELED SPOT SPRAYER



HIGHFLO
HIGH PERFORMANCE

BEST IN CLASS PUMP

- 1.2 GPM High Performance 12 Volt Pump
- Maximum Pressure Of 60 PSI
- Pressure Switch Turns Pump On & Off
- Self Priming
- Can Run Dry Without Damage
- Chemical Resistant Components
- Fan Cooled To Promote Longevity & Efficiency



LEVER GRIP SPRAY WAND

- Up To 25 Feet Horizontal Spray
- Up To 15 Feet Vertical Spray
- Adjustable Spray Pattern



15 FEET OF COILED HOSE

- Chemical Resistant Polyurethane Hose
- Coils for Easy Storage
- Provides Up To 30 Feet of Spraying Diameter

8 GALLON TANK

SUPERIOR TANK STRENGTH

- High Density Polyethylene Tank with UV Stabilizer
- Delivers Years of Dependable Use

RECHARGABLE PORTABLE POWER

12 Volt Rechargeable Battery with Charger.

LG-8-P

Sprayer Weight	Water Weight	Sprayer W/Water Weight
23 lbs	67 lbs	90 lbs

Model #	Code #	Tank Size	Shipping Weight	Carton Size	Shipping Class	Cubic Feet	Ship Via	UPC Code
LG-8-P	5302164	8 Gallon	26#	19 x 17 x 23	150	4.3	GROUND	733029007841



15 TO 25 GALLON SPOT SPRAYER



12 VOLT PUMP



- 1.0 GPM 12 Volt Electric Pump
- Maximum Pressure Of 60 PSI
- Pressure Switch Turns Pump On & Off
- Self Priming
- Fuse Protected
- Can Run Dry Without Damage
- 1 Year Pump Warranty

FUSE PROTECTED 8 FT LEAD WIRE



- Helps Protect Your Vehicle Wiring
- Alligator Clips & On/Off Switch Included

5 INCH TANK LID



- Lid Tethered To Tank
- Splash Prevention Flap In Lid
- Venting Reduces Tank Pressure

IN TANK / INLINE STRAINER



- 3/8 Inch Hose Barb Connection
- Minimizes Chemical Waste

LEVER GRIP SPRAY WAND



- Up To 20 Feet Horizontal Spray
- Up To 12 Feet Vertical Spray
- Adjustable Spray Pattern

15 FEET OF 3/8 INCH HOSE



- Chemical Resistant Rubber Hose
- Easy To Wrap For Storage
- Less Prone To Kinking

**SOLD AS A 9 PACK (15-SP-GS-B)
OR AS A SINGLE UNIT BOX (15-SP-GS)**

15-SP-GS & 25-SP-GS

Model #	Code #	Tank Size	Shipping Weight	Carton Size	Shipping Class	Cubic Feet	Ship Via	UPC Code
15-SP-GS-B*	5303643	15 Gallon	140#	47 X 33 X 40	150	35.9	LTL	733029124753
15-SP-GS	5303644	15 Gallon	14#	32 X 15 X 14.75	150	4.1	GROUND	733029124760
25-SP-GS	5303645	25 Gallon	20#	32 X 14.75 X 20.25	150	5.5	GROUND	733029124777

* Only Available in Bulk Packaging of 9 in Multiples of 18. Minimum Order of 18.



10 TO 30 GALLON STANDARD SPOT SPRAYERS



HIGHFLO
HIGH PERFORMANCE

BEST IN CLASS PUMP

- 1.2 GPM High Performance 12 Volt Pump
- Maximum Pressure Of 60 PSI
- Pressure Switch Turns Pump On & Off
- Self Priming
- Can Run Dry Without Damage
- Chemical Resistant Components
- Fan Cooled To Promote Longevity & Efficiency



FUSE PROTECTED 8 FT LEAD WIRE

- Helps Protect Your Vehicle Wiring
- Alligator Clips & On/Off Switch Included



LEVER GRIP SPRAY WAND

- Up To 25 Feet Horizontal Spray
- Up To 15 Feet Vertical Spray
- Adjustable Spray Pattern



15 FEET OF 3/8 INCH HOSE

- Chemical Resistant Rubber Hose
- Easy To Wrap For Storage
- Less Prone To Kinking

**LG-10-EC, LG-15-EC,
LG-20-EC, LG-25-EC, LG-30-EC**

Sprayer Model	Sprayer Weight	Water Weight	Sprayer W/Water Weight
LG-10-EC	13 lbs	83 lbs	96 lbs
LG-15-EC	14 lbs	125 lbs	139 lbs
LG-20-EC	16 lbs	167 lbs	183 lbs
LG-25-EC	18 lbs	209 lbs	227 lbs
LG-30-EC	21 lbs	250 lbs	271 lbs

Model #	Code #	Tank Size	Shipping Weight	Carton Size	Shipping Class	Cubic Feet	Ship Via	UPC Code
LG-10-EC	5301547	10 Gallon	12#	31 x 14 x 12	150	3.1	GROUND	733029005250
LG-15-EC	5301302	15 Gallon	15#	34 x 14 x 16	150	4.5	GROUND	733029003058
LG-20-EC	5301548	20 Gallon	20#	38 x 18 x 15	150	6.0	GROUND	733029005267
LG-25-EC	5301378	25 Gallon	23#	40 x 16 x 19	150	7.1	GROUND	733029003195
LG-30-EC	5301561	30 Gallon	74#	42 x 19 x 16	150	8	GROUND	733029005472



15 TO 30 GALLON SPOT SPRAYERS



HIGHFLO
HIGH PERFORMANCE

BEST IN CLASS PUMP

- 2.4 GPM High Performance 12 Volt Pump
- Maximum Pressure Of 60 PSI
- Pressure Switch Turns Pump On & Off
- Self Priming
- Can Run Dry Without Damage
- Chemical Resistant Components
- Fan Cooled To Promote Longevity & Efficiency



FUSE PROTECTED 8 FT LEAD WIRE

- Helps Protect Your Vehicle Wiring
- Alligator Clips & On/Off Switch Included



LG-28-S
LG-30-S

DELUXE PISTOL GRIP SPRAY WAND

- Up To 40 Feet Horizontal Spray
- Up To 25 Feet Vertical Spray
- Adjustable Spray Pattern



LG-13-P
LG-29-P

LEVER GRIP SPRAY WAND

- Up To 30 Feet Horizontal Spray
- Up To 16 Feet Vertical Spray
- Adjustable Spray Pattern



15 FEET OF 3/8 INCH HOSE

- Chemical Resistant Rubber Hose
- Easy To Wrap For Storage
- Less Prone To Kinking

LG-13-P, LG-29-P, LG-28-S, LG-30-S

Sprayer Model	Sprayer Weight	Water Weight	Sprayer W/Water Weight
LG-13-P	16 lbs	125 lbs	141 lbs
LG-29-P	20 lbs	209 lbs	229 lbs
LG-28-S	21 lbs	209 lbs	230 lbs
LG-30-S	24 lbs	250 lbs	274 lbs

Model #	Code #	Tank Size	Shipping Weight	Carton Size	Shipping Class	Cubic Feet	Ship Via	UPC Code
LG-13-P	5300393	15 Gallon	18#	34 x 14 x 16	150	4.5	GROUND	733029001009
LG-29-P	5300632	25 Gallon	24#	40 x 16 x 19	150	7.1	GROUND	733029001443
LG-28-S	5301063	25 Gallon	24#	40 x 16 x 19	150	7.1	GROUND	733029002310
LG-30-S	5301478	30 Gallon	28#	42 x 19 x 16	150	7.4	GROUND	733029004246



15 & 25 GALLON SPOT SPRAYERS



HIGHFLO
HIGH PERFORMANCE

BEST IN CLASS PUMP

- 2.4 GPM High Performance 12 Volt Pump
- Maximum Pressure Of 60 PSI
- Pressure Switch Turns Pump On & Off
- Self Priming
- Can Run Dry Without Damage
- Chemical Resistant Components
- Fan Cooled To Promote Longevity & Efficiency



MANIFOLD W/PRESSURE GAUGE

- Lever Ball Valves Allow Flow & Pressure Control
- Easily Monitor Pressure With Highly Visible Gauge
- Quick Connect Fittings Enables Fast Configuration



LEVER GRIP SPRAY WAND

- Up To 30 Feet Horizontal Spray
- Up To 16 Feet Vertical Spray
- Adjustable Spray Pattern



15 FEET OF 3/8 INCH HOSE

- Chemical Resistant Rubber Hose
- Easy To Wrap For Storage
- Less Prone To Kinking



FUSE PROTECTED 8 FT LEAD WIRE

- Helps Protect Your Vehicle Wiring
- Alligator Clips & On/Off Switch Included

LG-14-PM & LG-25-PM

Sprayer Model	Sprayer Weight	Water Weight	Sprayer W/Water Weight
LG-14-PM	16 lbs	125 lbs	141 lbs
LG-25-PM	22 lbs	209 lbs	231 lbs

Model #	Code #	Tank Size	Shipping Weight	Carton Size	Shipping Class	Cubic Feet	Ship Via	UPC Code
LG-14-PM	5301144	15 Gallon	18#	34 x 14 x 16	150	4.5	GROUND	733029002549
LG-25-PM	5301146	25 Gallon	24#	40 x 16 x 19	150	7.1	GROUND	733029002563



15 & 25 GALLON SPOT SPRAYERS



HIGHFLO
HIGH PERFORMANCE

BEST IN CLASS PUMP

- 2.4 GPM High Performance 12 Volt Pump
- Maximum Pressure Of 60 PSI
- Pressure Switch Turns Pump On & Off
- Self Priming
- Can Run Dry Without Damage
- Chemical Resistant Components
- Fan Cooled To Promote Longevity & Efficiency



MANIFOLD W/PRESSURE GAUGE

- Lever Ball Valves Allow Flow & Pressure Control
- Easily Monitor Pressure With Highly Visible Gauge
- Quick Connect Fittings Enables Fast Configuration



DELUXE PISTOL GRIP SPRAY WAND

- Up To 40 Feet Horizontal Spray
- Up To 25 Feet Vertical Spray
- Adjustable Spray Pattern



15 FEET OF 3/8 INCH HOSE

- Chemical Resistant Rubber Hose
- Easy To Wrap For Storage
- Less Prone To Kinking



FUSE PROTECTED 8 FT LEAD WIRE

- Helps Protect Your Vehicle Wiring
- Alligator Clips & On/Off Switch Included

LG-14-SM & LG-25-SM

Sprayer Model	Sprayer Weight	Water Weight	Sprayer W/Water Weight
LG-14-SM	16 lbs	125 lbs	141 lbs
LG-25-SM	21 lbs	209 lbs	230 lbs

Model #	Code #	Tank Size	Shipping Weight	Carton Size	Shipping Class	Cubic Feet	Ship Via	UPC Code
LG-14-SM	5301145	15 Gallon	18#	34 x 14 x 16	150	4.5	GROUND	733029002556
LG-25-SM	5301147	25 Gallon	24#	40 x 16 x 19	150	7.1	GROUND	733029002570



25 GALLON SPOT SPRAYER



HIGHFLO
HIGH PERFORMANCE

BEST IN CLASS PUMP

- 4.5 GPM High Performance 12 Volt Pump
- Maximum Pressure Of 60 PSI
- Pressure Switch Turns Pump On & Off
- Self Priming
- Can Run Dry Without Damage
- Chemical Resistant Components
- Fan Cooled To Promote Longevity & Efficiency



MANIFOLD W/PRESSURE GAUGE

- Lever Ball Valves Allow Flow & Pressure Control
- Easily Monitor Pressure With Highly Visible Gauge
- Quick Connect Fittings Enables Fast Configuration



DELUXE PISTOL GRIP SPRAY WAND

- Up To 40 Feet Horizontal Spray
- Up To 28 Feet Vertical Spray
- Adjustable Spray Pattern



15 FEET OF 3/8 INCH HOSE

- Chemical Resistant Rubber Hose
- Easy To Wrap For Storage
- Less Prone To Kinking



FUSE PROTECTED 8 FT LEAD WIRE

- Helps Protect Your Vehicle Wiring
- Alligator Clips & On/Off Switch Included

LG-25-HV

Sprayer Weight	Water Weight	Sprayer W/Water Weight
22 lbs	209 lbs	231 lbs

Model #	Code #	Tank Size	Shipping Weight	Carton Size	Shipping Class	Cubic Feet	Ship Via	UPC Code
LG-25-HV	5301222	25 Gallon	24#	40 x 16 x 19	150	7.1	GROUND	733029002990



40 GALLON DELUXE SPOT SPRAYER



HIGHFLO
HIGH PERFORMANCE

BEST IN CLASS PUMP

- 2.4 GPM High Performance 12 Volt Pump
- Maximum Pressure Of 60 PSI
- Pressure Switch Turns Pump On & Off
- Self Priming
- Can Run Dry Without Damage
- Chemical Resistant Components
- Fan Cooled To Promote Longevity & Efficiency



FUSE PROTECTED 8 FT LEAD WIRE

- Helps Protect Your Vehicle Wiring
- Alligator Clips & On/Off Switch Included



DELUXE PISTOL GRIP SPRAY WAND

- Up To 40 Feet Horizontal Spray
- Up To 25 Feet Vertical Spray
- Adjustable Spray Pattern



15 FEET OF 3/8 INCH HOSE

- Chemical Resistant Rubber Hose
- Easy To Wrap For Storage
- Less Prone To Kinking

LG-40-DLX

Sprayer Weight	Water Weight	Sprayer W/Water Weight
28 lbs	334 lbs	362 lbs

Model #	Code #	Tank Size	Shipping Weight	Carton Size	Shipping Class	Cubic Feet	Ship Via	UPC Code
LG-40-DLX	5302186	40 Gallon	30#	30 x 20 x 24	150	8.4	GROUND	733029107336



45 GALLON SPOT SPRAYER



HIGHFLO
HIGH PERFORMANCE

BEST IN CLASS PUMP

- 4.5 GPM High Performance 12 Volt Pump
- Maximum Pressure Of 60 PSI
- Pressure Switch Turns Pump On & Off
- Self Priming - Can Run Dry Without Damage
- Fuse Protected
- Chemical Resistant Components
- Fan Cooled To Promote Longevity & Efficiency



MANIFOLD W/PRESSURE GAUGE

- Lever Ball Valves Allow Flow & Pressure Control
- Easily Monitor Pressure With Highly Visible Gauge
- Quick Connect Fittings Enables Fast Configuration



5 INCH TANK LID

- Lid Tethered To Tank
- Splash Prevention Flap In Lid
- Venting Reduces Tank Pressure



DELUXE PISTOL GRIP SPRAY WAND

- Up To 40 Feet Horizontal Spray
- Up To 28 Feet Vertical Spray
- Adjustable Spray Pattern



25 FEET OF 3/8 INCH HOSE

- Chemical Resistant Rubber Hose
- Easy To Wrap For Storage
- Less Prone To Kinking



FUSE PROTECTED 8 FT LEAD WIRE

- Helps Protect Your Vehicle Wiring
- Alligator Clips & On/Off Switch Included

LG-45-SS

Sprayer Weight	Water Weight	Sprayer W/Water Weight
32 lbs	375 lbs	407 lbs

Model #	Code #	Tank Size	Shipping Weight	Carton Size	Shipping Class	Cubic Feet	Ship Via	UPC Code
LG-45-SS	5303260	45 Gallon	32#	37.5 X 23.25 X 21.5	150	10.8	GROUND	733029123800



65 GALLON SPOT SPRAYER



HIGHFLO
HIGH PERFORMANCE

BEST IN CLASS PUMP

- 4.5 GPM High Performance 12 Volt Pump
- Maximum Pressure Of 60 PSI
- Pressure Switch Turns Pump On & Off
- Self Priming - Can Run Dry Without Damage
- Fuse Protected
- Chemical Resistant Components
- Fan Cooled To Promote Longevity & Efficiency



MANIFOLD W/PRESSURE GAUGE

- Lever Ball Valves Allow Flow & Pressure Control
- Easily Monitor Pressure With Highly Visible Gauge
- Quick Connect Fittings Enables Fast Configuration



5 INCH TANK LID

- Lid Tethered To Tank
- Splash Prevention Flap In Lid
- Venting Reduces Tank Pressure



22" HIGH PRESSURE SPRAY WAND

- Ergonomic Design Lends To Less Fatigue
- Up To 38 Ft Horizontal & 27 Ft Vertical Spray
- Adjustable Spray Pattern



25 FEET OF 3/8 INCH HOSE

- Chemical Resistant Rubber Hose
- Easy To Wrap For Storage
- Less Prone To Kinking



FUSE PROTECTED 8 FT LEAD WIRE

- Helps Protect Your Vehicle Wiring
- Alligator Clips & On/Off Switch Included

LG-65-HP

Sprayer Weight	Water Weight	Sprayer W/Water Weight
40 lbs	542 lbs	582 lbs

Model #	Code #	Tank Size	Shipping Weight	Carton Size	Shipping Class	Cubic Feet	Ship Via	UPC Code
LG-65-HP	5303623	65 Gallon	40#	44.25 X 25.25 X 23.5	150	15.2	GROUND	733029123824



BRUSH SPOT SPRAYERS



DESIGNED TO CONTROL TOUGHER INVASIVE SPECIES SUCH AS WOODY PLANTS AND VINES.



HIGH FLO PRO SERIES
PROFESSIONAL GRADE

BEST IN CLASS PUMP

- 2.2 GPM Pro Series 12 Volt Pump
- Maximum Pressure Of 100 PSI
- For Use With Oil-Water Emulsions, Oil Based Products And Harsh Chemicals
- Self Priming
- Can Run Dry Without Damage



15 FEET OF 3/8 INCH HOSE

- Chemical Resistant Rubber Hose
- Easy To Wrap For Storage
- Less Prone To Kinking



FUSE PROTECTED 8 FT LEAD WIRE

- Helps Protect Your Vehicle Wiring
- Alligator Clips & On/Off Switch Included



LEVER GRIP SPRAY WAND

- Up To 30 Feet Horizontal Spray
- Up To 20 Feet Vertical Spray
- Adjustable Spray Pattern

BR-15-SP-EC, BR-25-SP-EC & BR-40-SP-EC

Sprayer Model	Sprayer Weight	Water Weight	Sprayer W/Water Weight
BR-15-SP-EC	15 lbs	125 lbs	140 lbs
BR-25-SP-EC	18 lbs	209 lbs	227 lbs
BR-40-SP-EC	19 lbs	334 lbs	353 lbs

Model #	Code #	Tank Size	Shipping Weight	Carton Size	Shipping Class	Cubic Feet	Ship Via	UPC Code
BR-15-SP-EC	5303152	15 Gallon	18#	32 x 15 x 16	150	4.4	GROUND	733029121561
BR-25-SP-EC	5303153	25 Gallon	24#	32 x 15 x 21	150	5.9	GROUND	733029120755
BR-40-SP-EC	5303154	40 Gallon	22#	30 x 20 x 24	150	8.3	GROUND	733029121578



2-NOZZLE TRAILER SPRAYERS



15 Gallon 2-Nozzle Trailer Sprayer



HIGHFLO
HIGH PERFORMANCE

BEST IN CLASS PUMP

- 1.2 GPM High Performance 12 Volt Pump
- Maximum Pressure Of 60 PSI
- Pressure Switch Turns Pump On/Off As Needed
- Self Priming
- Can Run Dry Without Damage
- Chemical Resistant Components
- Fan Cooled To Promote Longevity & Efficiency



FUSE PROTECTED 8 FT LEAD WIRE

- Industry Leader In Safety
- Protects Vehicle Wiring
- Clips And On / Off Switch Included



Y MANIFOLD

- Lever Ball Valves Allow Flow & Pressure Control
- Garden Hose Threading Enables Fast Configuration

LEVER GRIP SPRAY WAND



- Up To 25 Feet Horizontal Spray
- Up To 15 Feet Vertical Spray
- Adjustable Spray Pattern



15 FEET OF 3/8 INCH HOSE

- Chemical Resistant Rubber Hose
- Remains Flexible
- Less Prone To Kinking



2-NOZZLE RIGID STEEL BOOM

- 2-Nozzle Boom Delivers 7 Feet Of Spray Coverage



TURF TIRES

- 12" Diameter Pneumatic Turf Tires
- 5/8" Solid Steel Axle
- Sealed Ball Bearings

15-2N-TRL-GS & 25-2N-TRL-GS

Sprayer Model	Sprayer Weight	Water Weight	Sprayer W/Water Weight
25-2N-TRL-GS	40 lbs	209 lbs	249 lbs
15-2N-TRL-GS	38 lbs	125 lbs	163 lbs

Model #	Code #	Tank Size	Shipping Weight	Carton Size	Shipping Class	Cubic Feet	Ship Via	UPC Code
15-2N-TRL-GS	5303198	15 Gallon	38#	40 X 15.75 X 15	150	5.5	GROUND	733029122056
25-2N-TRL-GS	5303199	25 Gallon	40#	40 X 15.75 X 21.25	150	7.7	GROUND	733029122063



25 GALLON 3-NOZZLE TRAILER SPRAYER

SPRAYER
1 YEAR
WARRANTY
PUMP
2 YEAR



HIGHFLO
HIGH PERFORMANCE

BEST IN CLASS PUMP

- 2.4 GPM High Performance 12 Volt Pump
- Maximum Pressure Of 60 PSI
- Pressure Switch Turns Pump On & Off
- Self Priming - Can Run Dry Without Damage
- Fuse Protected
- Chemical Resistant Components
- Fan Cooled To Promote Longevity & Efficiency



FUSE PROTECTED 8 FT LEAD WIRE

- Helps Protect Your Vehicle Wiring
- Alligator Clips & On/Off Switch Included



MANIFOLD W/PRESSURE GAUGE

- Lever Ball Valves Allow Flow & Pressure Control
- Easily Monitor Pressure With Highly Visible Gauge
- Quick Connect Fittings Enables Fast Configuration



LEVER GRIP SPRAY WAND

- Up To 30 Feet Horizontal Spray
- Up To 16 Feet Vertical Spray
- Adjustable Spray Pattern



15 FEET OF 3/8 INCH HOSE

- Chemical Resistant Rubber Hose
- Remains Flexible
- Less Prone To Kinking



PREMIUM SPRAY TIPS

- TeeJet Turbo Floodjet TF-VP3
- Reduces Chemical Drift
- Includes Check Valve Strainer



3-NOZZLE FOLDING STEEL BOOM

- Delivers 10 Feet of Spray Coverage
- 40 Inch Nozzle Spacing
- 82" Folding Steel Boom



TURF TIRES

- 12" Diameter Pneumatic Turf Tires
- 5/8" Solid Steel Axle
- Sealed Ball Bearings

25-3N-TRL-GS

Sprayer Weight	Water Weight	Sprayer W/Water Weight
43 lbs	209 lbs	252 lbs

Model #	Code #	Tank Size	Shipping Weight	Carton Size	Shipping Class	Cubic Feet	Ship Via	UPC Code
25-3N-TRL-GS	5303649	25 Gallon	43#	40 X 15.75 X 21.25	150	7.7	GROUND	733029124784



20 GALLON 2-NOZZLE TRAILER SPRAYER

SPRAYER
1 YEAR
WARRANTY
PUMP
2 YEAR



HIGHFLO
HIGH PERFORMANCE

BEST IN CLASS PUMP

- 2.4 GPM High Performance 12 Volt Pump
- Maximum Pressure Of 60 PSI
- Pressure Switch Turns Pump On & Off
- Self Priming
- Can Run Dry Without Damage
- Chemical Resistant Components
- Fan Cooled To Promote Longevity & Efficiency



MANIFOLD W/PRESSURE GAUGE

- Lever Ball Valves Allow Flow & Pressure Control
- Easily Monitor Pressure With Highly Visible Gauge
- Quick Connect Fittings Enables Fast Configuration



FUSE PROTECTED 8 FT LEAD WIRE

- Helps Protect Your Vehicle Wiring
- Alligator Clips & On/Off Switch Included
- Includes 5 foot lead wire extension



INNOVATIVE BREAK AWAY BOOM

- Boom Folds Backwards If Striking An Obstacle
- Boom Folds Forward For Compact Storage



DELUXE PISTOL GRIP SPRAY WAND

- Up To 40 Feet Horizontal Spray
- Up To 25 Feet Vertical Spray
- Adjustable Spray Pattern



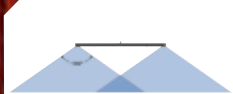
15 FEET OF 3/8 INCH HOSE

- Chemical Resistant Rubber Hose
- Easy To Wrap For Storage
- Less Prone To Kinking



PREMIUM SPRAY TIPS

- Premium Wide Angle Tips
- Reduces Chemical Drift
- Includes Anti-Drip Strainer



2-NOZZLE BREAKAWAY STEEL BOOM

- 2-Nozzle Boom Delivers 7 Feet Of Spray Coverage
- Folding Steel Boom



TURF TIRES

- 12" Diameter Pneumatic Turf Tires
- 5/8" Solid Steel Axle
- Sealed Ball Bearings

LG-20-TRL

Sprayer Weight	Water Weight	Sprayer W/Water Weight
51 lbs	167 lbs	218 lbs

Model #	Code #	Tank Size	Shipping Weight	Carton Size	Shipping Class	Cubic Feet	Ship Via	UPC Code
LG-20-TRL	5302316	20 Gallon	46#	36 x 20 x 17	150	7.1	GROUND	733029110008



30 GALLON 2-NOZZLE TRAILER SPRAYER



HIGHFLO
HIGH PERFORMANCE

BEST IN CLASS PUMP

- 2.4 GPM High Performance 12 Volt Pump
- Maximum Pressure Of 60 PSI
- Pressure Switch Turns Pump On & Off
- Self Priming
- Can Run Dry Without Damage
- Chemical Resistant Components
- Fan Cooled To Promote Longevity & Efficiency



MANIFOLD W/PRESSURE GAUGE

- Lever Ball Valves Allow Flow & Pressure Control
- Easily Monitor Pressure With Highly Visible Gauge
- Quick Connect Fittings Enables Fast Configuration



FUSE PROTECTED 8 FT LEAD WIRE

- Helps Protect Your Vehicle Wiring
- Alligator Clips & On/Off Switch Included
- Includes 5 foot lead wire extension



INNOVATIVE BREAK AWAY BOOM

- Boom Folds Backwards If Striking An Obstacle
- Boom Folds Forward For Compact Storage



DELUXE PISTOL GRIP SPRAY WAND

- Up To 40 Feet Horizontal Spray
- Up To 25 Feet Vertical Spray
- Adjustable Spray Pattern



15 FEET OF 3/8 INCH HOSE

- Chemical Resistant Rubber Hose
- Easy To Wrap For Storage
- Less Prone To Kinking



PREMIUM SPRAY TIPS

- Premium Wide Angle Tips
- Reduces Chemical Drift
- Includes Anti-Drip Strainer



2-NOZZLE BREAKAWAY STEEL BOOM

- 2-Nozzle Boom Delivers 7 Feet Of Spray Coverage
- Foldable Steel Boom



TURF TIRES

- 16" Diameter Pneumatic Turf Tires
- 3/4" Solid Steel Axle
- Heavy Duty Roller Bearings

LG-30-TRL

Sprayer Weight	Water Weight	Sprayer W/Water Weight
58 lbs	250 lbs	313 lbs

Model #	Code #	Tank Size	Shipping Weight	Carton Size	Shipping Class	Cubic Feet	Ship Via	UPC Code
LG-30-TRL	5302317	30 Gallon	62#	45 x 20 x 20	150	11	GROUND	733029110015



45 GALLON 4-NOZZLE 12V TRAILER SPRAYER



HIGHFLO
HIGH PERFORMANCE

BEST IN CLASS PUMP

- 2.4 GPM High Performance 12 Volt Pump
- Maximum Pressure Of 60 PSI
- Pressure Switch Turns Pump On & Off
- Self Priming - Can Run Dry Without Damage
- Fuse Protected
- Chemical Resistant Components
- Fan Cooled To Promote Longevity & Efficiency



MANIFOLD W/PRESSURE GAUGE

- Lever Ball Valves Allow Flow & Pressure Control
- Easily Monitor Pressure With Highly Visible Gauge
- Quick Connect Fittings Enables Fast Configuration



FUSE PROTECTED 8 FT LEAD WIRE

- Helps Protect Your Vehicle Wiring
- Alligator Clips & On/Off Switch Included
- Includes 5 foot lead wire extension



DELUXE PISTOL GRIP SPRAY WAND

- Up To 40 Feet Horizontal Spray
- Up To 25 Feet Vertical Spray
- Adjustable Spray Pattern



25 FEET OF 3/8 INCH HOSE

- Chemical Resistant Rubber Hose
- Easy To Wrap For Storage
- Less Prone To Kinking



PREMIUM SPRAY TIPS

- TeeJet AIXR11002 Air Induction XR Flat Spray Tips
- Reduces Chemical Drift
- Includes Check Valve Strainer



4-NOZZLE FOLDING STEEL BOOM

- 4-Nozzle Boom
- Delivers 10 Feet Of Spray Coverage
- Folding Steel Boom



TURF TIRES

- 16" Diameter Pneumatic Turf Tires
- 3/4" Solid Steel Axle
- Heavy Duty Roller Bearings

TRL-45-12V-4

Sprayer Weight	Water Weight	Sprayer W/Water Weight
103 lbs	375 lbs	478 lbs

Model #	Code #	Tank Size	Shipping Weight	Carton Size	Shipping Class	Cubic Feet	Ship Via	UPC Code
TRL-45-12V-4	5303635	45 Gallon	103#	39.75 X 23.5 X 25.5	150	13.8	GROUND	733029124135



65 GALLON 12V TRAILER SPRAYERS



65 Gallon 3-Nozzle Broadcast Trailer Sprayer



HIGHFLO
HIGH PERFORMANCE

BEST IN CLASS PUMP

- 4.5 GPM High Performance 12 Volt Pump
- Maximum Pressure Of 60 PSI
- Pressure Switch Turns Pump On & Off
- Self Priming - Can Run Dry Without Damage
- Fuse Protected
- Chemical Resistant Components
- Fan Cooled To Promote Longevity & Efficiency



MANIFOLD W/PRESSURE GAUGE

- Lever Ball Valves Allow Flow & Pressure Control
- Easily Monitor Pressure With Highly Visible Gauge
- Quick Connect Fittings Enables Fast Configuration



TURF TIRES

- 18" Diameter x 8.5" Wide Pneumatic Turf Tire
- 1" Solid Steel Axle
- Heavy Duty Greaseable Roller Bearings



DELUXE PISTOL GRIP SPRAY WAND

- Up To 40 Feet Horizontal Spray
- Up To 28 Feet Vertical Spray
- Adjustable Spray Pattern



25 FEET OF 3/8 INCH HOSE

- Chemical Resistant Rubber Hose
- Easy To Wrap For Storage
- Less Prone To Kinking



FUSE PROTECTED 8 FT LEAD WIRE

- Helps Protect Your Vehicle Wiring
- Alligator Clips & On/Off Switch Included
- Includes 5 foot lead wire extension

AVAILABLE BOOM OPTIONS

3-NOZZLE BROADCAST

- 36 Foot Spray Coverage
- Each Nozzle Sprays Independently

7-NOZZLE BOOM

- 12 Feet Spray Coverage
- Folding Steel Boom

TRL-65-12V-BL & TRL-12V-65-7

Sprayer Model	Sprayer Weight	Water Weight	Sprayer W/Water Weight
TRL-65-12V-BL	137 lbs	542 lbs	679 lbs
TRL-65-12V-7	153 lbs	542 lbs	695 lbs

Model #	Code #	Tank Size	Shipping Weight	Carton Size	Shipping Class	Cubic Feet	Ship Via	UPC Code
TRL-65-12V-BL	5303638	65 Gallon	137#	46 X 34.25 X 28.25	150	25.8	LTL	733029124470
TRL-65-12V-7	5303637	65 Gallon	153#	46 X 34.25 X 28.25	150	25.8	LTL	733029124463



65 GALLON GAS TRAILER SPRAYERS



65 Gallon 7-Nozzle Trailer Sprayer



BRIGGS & STRATTON ENGINE

- 127cc Gas Engine
- 4 Roller Pump - 6 GPM
- Pressure Relief Valve
- 2" 0-200 PSI Dry Gauge
- Suction Line Sump
- 3/4 Inch Black Poly Strainer



TURF TIRES

- 18" Diameter x 8.5" Wide Pneumatic Turf Tire
- 1" Solid Steel Axle
- Heavy Duty Greaseable Roller Bearings



DELUXE PISTOL GRIP SPRAY WAND

- Up To 45 Feet Horizontal Spray
- Up To 30 Feet Vertical Spray
- Adjustable Spray Pattern



25 FEET OF 3/8 INCH HOSE

- Chemical Resistant Rubber Hose
- Easy To Wrap For Storage
- Less Prone To Kinking

AVAILABLE BOOM OPTIONS

3-NOZZLE BROADCAST

- 36 Foot Spray Coverage
- Each Nozzle Sprays Independently

7-NOZZLE BOOM

- 12 Feet Spray Coverage
- Folding Steel Boom

TRL-65-4R-BL & TRL-65-4R-7

Sprayer Model	Sprayer Weight	Water Weight	Sprayer W/Water Weight
TRL-65-4R-BL	214 lbs	542 lbs	756 lbs
TRL-65-4R-7	230 lbs	542 lbs	772 lbs

Model #	Code #	Tank Size	Shipping Weight	Carton Size	Shipping Class	Cubic Feet	Ship Via	UPC Code
TRL-65-4R-BL	5303640	65 Gallon	214#	73 X 26 X 30.5	150	33.5	LTL	733029124494
TRL-65-4R-7	5303639	65 Gallon	230#	73 X 26 X 30.5	150	33.5	LTL	733029124487



200 GALLON TRAILER SPRAYER



BRIGGS & STRATTON ENGINE

- 127cc Gas Engine
- XR550 Engine
- 5.50 ft-lb Gross Torque



EASY ACCESS TO COMPONENTS

- Direct Drive Hypro 4 Roller Pump
- 7.2 GPM Max Flow
- 150 PSI Max Pressure
- Pressure Regulator
- Anti Vortex Suction Bulkhead
- 0-400 PSI Liquid Filled Pressure Gauge



HEAVY DUTY WHEELS

- 23" Diameter x 10.5" Wide Pneumatic Turf Tires
- 12" 5 Bolt Rims



TRAILER HITCH

- Height Adjustable
- Fold Away Tongue Stand



HEAVY DUTY SPRAY NOZZLE

- Rubber Grip
- Adjustable Spray Pattern



MANUAL HOSE REEL

- 100 Feet
- 600 PSI 1/2" PVC Hose

MAXIMUM TOW SPEED 10 MPH

FT-200-4R

Sprayer Weight	Water Weight	Sprayer W/Water Weight
550 lbs	1670 lbs	2220 lbs

Model #	Code #	Tank Size	Shipping Weight	Carton Size	Shipping Class	Cubic Feet	Ship Via	UPC Code
FT-200-4R	5303634	200 Gallon	550#	84 X 60 X 54	150	157.5	LTL	733029123909



200 GALLON PASTURE SPRAYER



BRIGGS & STRATTON ENGINE

- 127cc Gas Engine
- Hypro 4 Roller Cast Iron Pump
- The Long-Life OHV Design Runs Cool And Clear To Deliver Exceptional Power And Fuel Economy
- The Forged Crankshaft And Dura-Bore Cast Iron Cylinder Sleeve Withstand Wear And Tear For A Long Engine Life



PRESSURE GAUGE / RELIEF VALVE

- 2" Pressure Gauge 0-200 PSI
- TeeJet Pressure Regulator
- TeeJet Directo Valves For Left And Right Boom Control

200
GALLON TANK

SUPERIOR TANK STRENGTH

- High Density Polyethylene Tank with UV Stabilizer
- Delivers Years of Dependable Use
- 10" Tethered Lid



2-NOZZLE BROADCAST

- Stainless Steel Fittings With 32' Coverage At 4.8 GPM
- Hypro XT024 Boom X Tender Spray Nozzles
- Toolless Nozzle Height Adjustment



TRAILER HITCH

- Height Adjustable
- Fold Away Tongue Stand



22" HIGH PRESSURE SPRAY WAND

- Ergonomic Design Lends To Less Fatigue
- Up To 38 Ft Horizontal & 27 Ft Vertical Spray
- Adjustable Spray Pattern



25 FEET OF 3/8 INCH HOSE

- Chemical Resistant Rubber Hose
- Easy To Wrap For Storage
- Less Prone To Kinking



HEAVY DUTY WHEELS

- 23" Diameter x 10.5" Wide Pneumatic Turf Tires
- 12" 5 Bolt Rims

MAXIMUM TOW SPEED 10 MPH

ATVTS-200-4R-BL

Sprayer Weight	Water Weight	Sprayer W/Water Weight
550 lbs	1670 lbs	2220 lbs

Model #	Code #	Tank Size	Shipping Weight	Carton Size	Shipping Class	Cubic Feet	Ship Via	UPC Code
ATVTS-200-4R-BL	5303223	200 Gallon	550#	84 X 60 X 54	150	157.5	LTL	733029122339



15 GALLON 2-NOZZLE VALUE ATV SPRAYER



HIGHFLO
HIGH PERFORMANCE

BEST IN CLASS PUMP

- 1.2 GPM High Performance 12 Volt Pump
- Maximum Pressure Of 60 PSI
- Pressure Switch Turns Pump On/Off As Needed
- Self Priming
- Can Run Dry Without Damage
- Chemical Resistant Components
- Fan Cooled To Promote Longevity & Efficiency



FUSE PROTECTED 8 FT LEAD WIRE

- Industry Leader In Safety
- Protects Vehicle Wiring
- Clips And On / Off Switch Included



Y MANIFOLD

- Lever Ball Valves Allow Flow & Pressure Control
- Garden Hose Threading Enables Fast Configuration



LEVER GRIP SPRAY WAND

- Up To 25 Feet Horizontal Spray
- Up To 15 Feet Vertical Spray
- Adjustable Spray Pattern



15 FEET OF 3/8 INCH HOSE

- Chemical Resistant Rubber Hose
- Remains Flexible
- Less Prone To Kinking



2-NOZZLE RIGID STEEL BOOM

- 2-Nozzle Boom Delivers 7 Feet Of Spray Coverage

15-2N-ATV-GS

Sprayer Model	Sprayer Weight	Water Weight	Sprayer W/Water Weight
15-2N-ATV-GS	26 lbs	125 lbs	151 lbs

Model #	Code #	Tank Size	Shipping Weight	Carton Size	Shipping Class	Cubic Feet	Ship Via	UPC Code
15-2N-ATV-GS	5303197	15 Gallon	26#	40 X 15.75 X 15	150	5.5	GROUND	733029122049



25 GALLON 3-NOZZLE ATV SPRAYER



HIGH FLO
HIGH PERFORMANCE

BEST IN CLASS PUMP

- 2.4 GPM High Performance 12 Volt Pump
- Maximum Pressure Of 60 PSI
- Pressure Switch Turns Pump On & Off
- Self Priming - Can Run Dry Without Damage
- Fuse Protected
- Chemical Resistant Components
- Fan Cooled To Promote Longevity & Efficiency



FUSE PROTECTED 8 FT LEAD WIRE

- Helps Protect Your Vehicle Wiring
- Alligator Clips & On/Off Switch Included



MANIFOLD W/PRESSURE GAUGE

- Lever Ball Valves Allow Flow & Pressure Control
- Easily Monitor Pressure With Highly Visible Gauge
- Quick Connect Fittings Enables Fast Configuration



LEVER GRIP SPRAY WAND

- Up To 30 Feet Horizontal Spray
- Up To 16 Feet Vertical Spray
- Adjustable Spray Pattern



15 FEET OF 3/8 INCH HOSE

- Chemical Resistant Rubber Hose
- Remains Flexible
- Less Prone To Kinking



PREMIUM SPRAY TIPS

- TeeJet Turbo Floodjet TF-VP3
- Reduces Chemical Drift
- Includes Check Valve Strainer



3-NOZZLE FOLDING STEEL BOOM

- Delivers 10 Feet of Spray Coverage
- 40 Inch Nozzle Spacing
- 82" Folding Steel Boom

25-3N-ATV-GS

Sprayer Weight	Water Weight	Sprayer W/Water Weight
30 lbs	209 lbs	239 lbs

Model #	Code #	Tank Size	Shipping Weight	Carton Size	Shipping Class	Cubic Feet	Ship Via	UPC Code
25-3N-ATV-GS	5303648	25 Gallon	30#	40 X 15.75 X 21.25	150	7.7	GROUND	733029124814



15 & 20 GALLON 2-NOZZLE ATV SPRAYERS



HIGHFLO
HIGH PERFORMANCE

BEST IN CLASS PUMP

- 2.4 GPM High Performance 12 Volt Pump
- Maximum Pressure Of 60 PSI
- Pressure Switch Turns Pump On & Off
- Self Priming
- Can Run Dry Without Damage
- Chemical Resistant Components
- Fan Cooled To Promote Longevity & Efficiency



MANIFOLD W/PRESSURE GAUGE

- Lever Ball Valves Allow Flow & Pressure Control
- Easily Monitor Pressure With Highly Visible Gauge
- Quick Connect Fittings Enables Fast Configuration



FUSE PROTECTED 8 FT LEAD WIRE

- Helps Protect Your Vehicle Wiring
- Alligator Clips & On/Off Switch Included



QUICK RELEASE BOOM CLAMPS

- Quickly And Easily Install Or Remove Boom
- Securely Clamps Boom Into Place



LEVER GRIP SPRAY WAND

- Up To 30 Feet Horizontal Spray
- Up To 16 Feet Vertical Spray
- Adjustable Spray Pattern



15 FEET OF 3/8 INCH HOSE

- Chemical Resistant Rubber Hose
- Easy To Wrap For Storage
- Less Prone To Kinking



PREMIUM SPRAY TIPS

- Premium Wide Angle Tips
- Reduces Chemical Drift
- Includes Anti-Drip Strainer



2-NOZZLE RIGID STEEL BOOM

- 2-Nozzle Boom Delivers 7 Feet Of Spray Coverage
- Solid Steel Boom

ATV-15-2-QR & ATV-20-2-QR

Sprayer Model	Sprayer Weight	Water Weight	Sprayer W/ Water Weight
ATV-15-2-QR	25 lbs	167 lbs	192 lbs
ATV-20-2-QR	27 lbs	167 lbs	194 lbs

Model #	Code #	Tank Size	Shipping Weight	Carton Size	Shipping Class	Cubic Feet	Ship Via	UPC Code
ATV-15-2-QR	5302318	15 Gallon	26#	40 x 19 x 16	150	7.1	GROUND	733029110022
ATV-20-2QR	5302319	20 Gallon	27#	40 x 19 x 16	150	7.1	GROUND	733029110039



25 GALLON 7-NOZZLE ATV SPRAYER



HIGHFLO
HIGH PERFORMANCE

BEST IN CLASS PUMP

- 2.4 GPM High Performance 12 Volt Pump
- Maximum Pressure Of 60 PSI
- Pressure Switch Turns Pump On & Off
- Self Priming
- Can Run Dry Without Damage
- Chemical Resistant Components
- Fan Cooled To Promote Longevity & Efficiency



MANIFOLD W/PRESSURE GAUGE

- Lever Ball Valves Allow Flow & Pressure Control
- Easily Monitor Pressure With Highly Visible Gauge
- Quick Connect Fittings Enables Fast Configuration



FUSE PROTECTED 8 FT LEAD WIRE

- Helps Protect Your Vehicle Wiring
- Alligator Clips & On/Off Switch Included



QUICK RELEASE BOOM CLAMPS

- Quickly And Easily Install Or Remove Boom
- Securely Clamps Boom Into Place



LEVER GRIP SPRAY WAND

- Up To 30 Feet Horizontal Spray
- Up To 16 Feet Vertical Spray
- Adjustable Spray Pattern



15 FEET OF 3/8 INCH HOSE

- Chemical Resistant Rubber Hose
- Easy To Wrap For Storage
- Less Prone To Kinking



PREMIUM SPRAY TIPS

- Premium Air Induction Tips
- Reduces Chemical Drift
- Includes Anti-Drip Strainer



7-NOZZLE FOLDING STEEL BOOM

- 7-Nozzle Boom Delivers 12 Feet Of Spray Coverage
- Folding Steel Boom

ATV-25-700-QR

Sprayer Weight	Water Weight	Sprayer W/Water Weight
50 lbs	209 lbs	268 lbs

Model #	Code #	Tank Size	Shipping Weight	Carton Size	Shipping Class	Cubic Feet	Ship Via	UPC Code
ATV-25-700-QR	5302320	25 Gallon	56#	56 x 20 x 21	150	13.7	GROUND	733029110046



25 GALLON 7-NOZZLE DELUXE ATV SPRAYER



HIGHFLO
HIGH PERFORMANCE

BEST IN CLASS PUMP

- 4.5 GPM High Performance 12 Volt Pump
- Maximum Pressure Of 60 PSI
- Pressure Switch Turns Pump On & Off
- Self Priming
- Can Run Dry Without Damage
- Chemical Resistant Components
- Fan Cooled To Promote Longevity & Efficiency



MANIFOLD W/PRESSURE GAUGE

- Lever Ball Valves Allow Flow & Pressure Control
- Easily Monitor Pressure With Highly Visible Gauge
- Quick Connect Fittings Enables Fast Configuration



FUSE PROTECTED 8 FT LEAD WIRE

- Helps Protect Your Vehicle Wiring
- Alligator Clips & On/Off Switch Included



QUICK RELEASE BOOM CLAMPS

- Quickly And Easily Install Or Remove Boom
- Securely Clamps Boom Into Place



DELUXE PISTOL GRIP SPRAY WAND

- Up To 40 Feet Horizontal Spray
- Up To 28 Feet Vertical Spray
- Adjustable Spray Pattern



15 FEET OF 3/8 INCH HOSE

- Chemical Resistant Rubber Hose
- Easy To Wrap For Storage
- Less Prone To Kinking



PREMIUM SPRAY TIPS

- Premium Air Induction Tips
- Reduces Chemical Drift
- Includes ChemSaver Drip-Free Shut Off



7-NOZZLE FOLDING STEEL BOOM

- 7-Nozzle Boom Delivers 12 Feet Of Spray Coverage
- Shielded Folding Steel Boom

ATV-25-71-QR

Sprayer Weight	Water Weight	Sprayer W/Water Weight
64 lbs	209 lbs	273 lbs

Model #	Code #	Tank Size	Shipping Weight	Carton Size	Shipping Class	Cubic Feet	Ship Via	UPC Code
ATV-25-71-QR	5302321	25 Gallon	65#	56 x 20 x 21	150	13.7	GROUND	733029110053



25 GALLON 2-NOZZLE BROADCAST ATV SPRAYER



HIGHFLO
HIGH PERFORMANCE

BEST IN CLASS PUMP

- 4.5 GPM High Performance 12 Volt Pump
- Maximum Pressure Of 60 PSI
- Pressure Switch Turns Pump On & Off
- Self Priming
- Can Run Dry Without Damage
- Chemical Resistant Components
- Fan Cooled To Promote Longevity & Efficiency



FUSE PROTECTED 8 FT LEAD WIRE

- Helps Protect Your Vehicle Wiring
- Alligator Clips & On/Off Switch Included



PREMIUM SPRAY TIPS

- FIMCO Exclusive Long Range Spray Nozzles
- Reduces Chemical Drift



QUICK RELEASE BOOM CLAMPS

- Quickly And Easily Install Or Remove Boom
- Securely Clamps Boom Into Place



DELUXE PISTOL GRIP SPRAY WAND

- Up To 40 Feet Horizontal Spray
- Up To 25 Feet Vertical Spray
- Adjustable Spray Pattern



15 FEET OF 3/8 INCH HOSE

- Chemical Resistant Rubber Hose
- Easy To Wrap For Storage
- Less Prone To Kinking



2-NOZZLE BROADCAST BOOM

- 2 Nozzle Spray Pattern
- Delivers 28 Feet Of Spray Coverage

LG-25-BL-QR

Sprayer Weight	Water Weight	Sprayer W/Water Weight
31 lbs	209 lbs	240 lbs

Model #	Code #	Tank Size	Shipping Weight	Carton Size	Shipping Class	Cubic Feet	Ship Via	UPC Code
LG-25-BL-QR	5302323	25 Gallon	37#	39 x 19 x 16	150	6.9	GROUND	733029110077



25 GALLON 3-NOZZLE BROADCAST ATV SPRAYER



HIGHFLO
HIGH PERFORMANCE

BEST IN CLASS PUMP

- 4.5 GPM High Performance 12 Volt Pump
- Maximum Pressure Of 60 PSI
- Pressure Switch Turns Pump On & Off
- Self Priming
- Can Run Dry Without Damage
- Chemical Resistant Components
- Fan Cooled To Promote Longevity & Efficiency



MANIFOLD W/PRESSURE GAUGE

- Lever Ball Valves Allow Flow & Pressure Control
- Easily Monitor Pressure With Highly Visible Gauge
- Quick Connect Fittings Enables Fast Configuration



FUSE PROTECTED 8 FT LEAD WIRE

- Helps Protect Your Vehicle Wiring
- Alligator Clips & On/Off Switch Included



QUICK RELEASE BOOM CLAMPS

- Quickly And Easily Install Or Remove Boom
- Securely Clamps Boom Into Place



DELUXE PISTOL GRIP SPRAY WAND

- Up To 40 Feet Horizontal Spray
- Up To 28 Feet Vertical Spray
- Adjustable Spray Pattern



15 FEET OF 3/8 INCH HOSE

- Chemical Resistant Rubber Hose
- Easy To Wrap For Storage
- Less Prone To Kinking



PREMIUM SPRAY TIPS

- Exclusive nozzle bodies and spray tips
- Includes on/off valves & drip free nozzles
- Each nozzle can be used independently



3-NOZZLE BROADCAST BOOM

- Broadcast Boom Delivers 36 Feet Of Spray Coverage
- End Nozzles Sprays 15 Feet
- Center Nozzle Sprays 6 Feet

LG-3025-QR

Sprayer Weight	Water Weight	Sprayer W/Water Weight
31 lbs	209 lbs	240 lbs

Model #	Code #	Tank Size	Shipping Weight	Carton Size	Shipping Class	Cubic Feet	Ship Via	UPC Code
LG-3025-QR	5302322	25 Gallon	35#	39 x 19 x 16	150	6	GROUND	733029110060



45 GALLON 3-NOZZLE UTV SPRAYER



HIGHFLO
HIGH PERFORMANCE

BEST IN CLASS PUMP

- 2.4 GPM High Performance 12 Volt Pump
- Maximum Pressure Of 60 PSI
- Pressure Switch Turns Pump On & Off
- Self Priming - Can Run Dry Without Damage
- Fuse Protected
- Chemical Resistant Components
- Fan Cooled To Promote Longevity & Efficiency



FUSE PROTECTED 8 FT LEAD WIRE

- Helps Protect Your Vehicle Wiring
- Alligator Clips & On/Off Switch Included



MANIFOLD W/PRESSURE GAUGE

- Lever Ball Valves Allow Flow & Pressure Control
- Easily Monitor Pressure With Highly Visible Gauge
- Quick Connect Fittings Enables Fast Configuration



LEVER GRIP SPRAY WAND

- Up To 30 Feet Horizontal Spray
- Up To 16 Feet Vertical Spray
- Adjustable Spray Pattern



15 FEET OF 3/8 INCH HOSE

- Chemical Resistant Rubber Hose
- Remains Flexible
- Less Prone To Kinking



PREMIUM SPRAY TIPS

- TeeJet AIXR11002 Air Induction XR Flat Spray Tips
- Reduces Chemical Drift
- Includes Check Valve Strainer



3-NOZZLE FOLDING STEEL BOOM

- Delivers 7.5 Feet of Spray Coverage
- 30 Inch Nozzle Spacing
- 62" Folding Steel Boom
- Boom Mounts To Standard 2" Receiver

45-3N-UTV-GS

Sprayer Weight	Water Weight	Sprayer W/Water Weight
45 lbs	375 lbs	420 lbs

Model #	Code #	Tank Size	Shipping Weight	Carton Size	Shipping Class	Cubic Feet	Ship Via	UPC Code
45-3N-UTV-GS	5303650	45 Gallon	45#	37.5 X 23.25 X 21.5	150	10.8	GROUND	733029124791



65 GALLON 5-NOZZLE UTILITY VEHICLE SPRAYER



HIGHFLO
HIGH PERFORMANCE

BEST IN CLASS PUMP

- 2.4 GPM High Performance 12 Volt Pump
- Maximum Pressure Of 60 PSI
- Pressure Switch Turns Pump On & Off
- Self Priming - Can Run Dry Without Damage
- Fuse Protected
- Chemical Resistant Components
- Fan Cooled To Promote Longevity & Efficiency



FUSE PROTECTED 8 FT LEAD WIRE

- Helps Protect Your Vehicle Wiring
- Alligator Clips & On/Off Switch Included



MANIFOLD W/PRESSURE GAUGE

- Lever Ball Valves Allow Flow & Pressure Control
- Easily Monitor Pressure With Highly Visible Gauge
- Quick Connect Fittings Enables Fast Configuration



LEVER GRIP SPRAY WAND

- Up To 30 Feet Horizontal Spray
- Up To 20 Feet Vertical Spray
- Adjustable Spray Pattern



15 FEET OF 3/8 INCH HOSE

- Chemical Resistant Rubber Hose
- Remains Flexible
- Less Prone To Kinking



PREMIUM SPRAY TIPS

- TeeJet AIXR11002 Air Induction XR Flat Spray Tips
- Reduces Chemical Drift
- Includes Check Valve Strainer



5-NOZZLE FOLDING STEEL BOOM

- Delivers 12.5 Feet of Spray Coverage
- 30 Inch Nozzle Spacing
- 122" Folding Steel Boom
- Boom Mounts To Standard 2" Receiver

65-5N-UTV-GS

Sprayer Weight	Water Weight	Sprayer W/Water Weight
56 lbs	542 lbs	598 lbs

Model #	Code #	Tank Size	Shipping Weight	Carton Size	Shipping Class	Cubic Feet	Ship Via	UPC Code
65-5N-UTV-GS	5303651	65 Gallon	56#	44.25 X 25.25 X 23.5	150	15.2	GROUND	733029124807



45 GALLON UTILITY VEHICLE SPRAYERS



7-Nozzle Boom



HIGHFLO
HIGH PERFORMANCE

BEST IN CLASS PUMP

- 4.5 GPM High Performance 12 Volt Pump
- Maximum Pressure Of 60 PSI
- Pressure Switch Turns Pump On & Off
- Self Priming
- Can Run Dry Without Damage
- Chemical Resistant Components
- Fan Cooled To Promote Longevity & Efficiency



MANIFOLD W/PRESSURE GAUGE

- Lever Ball Valves Allow Flow & Pressure Control
- Easily Monitor Pressure With Highly Visible Gauge
- Quick Connect Fittings Enables Fast Configuration



FUSE PROTECTED 8 FT LEAD WIRE

- Helps Protect Your Vehicle Wiring
- Alligator Clips & On/Off Switch Included



FIMCO EXCLUSIVE MEASURING LID

- Accurately measure and pour chemicals
- 32 oz measuring cup is attached to tank lid
- Garden hose port secures hose for easy filling



DELUXE PISTOL GRIP SPRAY WAND

- Up To 40 Feet Horizontal Spray
- Up To 28 Feet Vertical Spray
- Adjustable Spray Pattern



25 FEET OF 3/8 INCH HOSE

- Chemical Resistant Rubber Hose
- Easy To Wrap For Storage
- Less Prone To Kinking

AVAILABLE BOOM OPTIONS

3-NOZZLE BROADCAST

- 36 Foot Spray Coverage
- Each Nozzle Sprays Independently

7-NOZZLE BOOM

- 12 Feet Spray Coverage
- Folding Steel Boom



AVAILABLE ACCESSORY

HEAVY DUTY HOSE REEL

- 50 Feet Of 3/8 Inch Hose

UTV-45-7 & UTV-45-BL

Product	Tank Size	Dry Sprayer Weight Without Spray Boom	Dry Sprayer Weight With Spray Boom	Total Sprayer Weight When Filled with Water
UTV-45-7	36" x 30"	53 lbs	83 lbs	465 lbs
UTV-45-BL	36" x 30"	53 lbs	66 lbs	450 lbs

Model #	Code #	Tank Size	Shipping Weight	Carton Size	Shipping Class	Cubic Feet	Ship Via	UPC Code
UTV-45-7	5302864	45 Gallon	85#	46 x 31 x 19	150	14	LTL	733029114839
UTV-45-BL	5302865	45 Gallon	68#	37 x 31 x 18	150	14	LTL	733029114822
UTV-HR-50	5302886	NA	33#	34 x 16 x 14	85	4.5	GROUND	733029115003



65 GALLON UTILITY VEHICLE SPRAYERS



3-Nozzle Boomless



BEST IN CLASS PUMP

- 4.5 GPM High Performance 12 Volt Pump
- Maximum Pressure Of 60 PSI
- Pressure Switch Turns Pump On & Off
- Self Priming
- Can Run Dry Without Damage
- Chemical Resistant Components
- Fan Cooled To Promote Longevity & Efficiency



DELUXE PISTOL GRIP SPRAY WAND

- Up To 40 Feet Horizontal Spray
- Up To 28 Feet Vertical Spray
- Adjustable Spray Pattern



25 FEET OF 3/8 INCH HOSE

- Chemical Resistant Rubber Hose
- Easy To Wrap For Storage
- Less Prone To Kinking



MANIFOLD W/PRESSURE GAUGE

- Lever Ball Valves Allow Flow & Pressure Control
- Easily Monitor Pressure With Highly Visible Gauge
- Quick Connect Fittings Enables Fast Configuration



FUSE PROTECTED 8 FT LEAD WIRE

- Helps Protect Your Vehicle Wiring
- Alligator Clips & On/Off Switch Included



FIMCO EXCLUSIVE MEASURING LID

- Accurately measure and pour chemicals
- 32 oz measuring cup is attached to tank lid
- Garden hose port secures hose for easy filling

AVAILABLE BOOM OPTIONS

3-NOZZLE BROADCAST

- 36 Foot Spray Coverage
- Each Nozzle Sprays Independently

7-NOZZLE BOOM

- 12 Feet Spray Coverage
- Folding Steel Boom



AVAILABLE ACCESSORY

HEAVY DUTY HOSE REEL

- 50 Feet Of 3/8 Inch Hose

UTV-65-7 & UTV-65-BL

Product	Tank Size	Dry Sprayer Weight Without Spray Boom	Dry Sprayer Weight With Spray Boom	Total Sprayer Weight When Filled with Water
UTV-65-7	47" x 34.5"	58 lbs	87 lbs	640 lbs
UTV-65-BL	47" x 34.5"	58 lbs	72 lbs	625 lbs

Model #	Code #	Tank Size	Shipping Weight	Carton Size	Shipping Class	Cubic Feet	Ship Via	UPC Code
UTV-65-7	5302830	65 Gallon	97#	48 x 36 x 19	150	18	LTL	733029114433
UTV-65-BL	5302843	65 Gallon	85#	48 x 36 x 19	150	18	LTL	733029114327
UTV-HR-50	5302886	NA	33#	34 x 16 x 14	85	4.5	GROUND	733029115003



30 GALLON 3-NOZZLE 3 POINT SPRAYER



HIGHFLO
HIGH PERFORMANCE

BEST IN CLASS PUMP

- 2.4 GPM High Performance 12 Volt Pump
- Maximum Pressure Of 60 PSI
- Pressure Switch Turns Pump On & Off
- Self Priming - Can Run Dry Without Damage
- Fuse Protected
- Chemical Resistant Components
- Fan Cooled To Promote Longevity & Efficiency



FUSE PROTECTED 8 FT LEAD WIRE

- Helps Protect Your Vehicle Wiring
- Alligator Clips & On/Off Switch Included



MANIFOLD W/PRESSURE GAUGE

- Lever Ball Valves Allow Flow & Pressure Control
- Easily Monitor Pressure With Highly Visible Gauge
- Quick Connect Fittings Enables Fast Configuration

LEVER GRIP SPRAY WAND



- Up To 30 Feet Horizontal Spray
- Up To 16 Feet Vertical Spray
- Adjustable Spray Pattern



15 FEET OF 3/8 INCH HOSE

- Chemical Resistant Rubber Hose
- Remains Flexible
- Less Prone To Kinking



PREMIUM SPRAY TIPS

- TeeJet AIXR11002 Air Induction XR Flat Spray Tips
- Reduces Chemical Drift
- Includes Check Valve Strainer



3-NOZZLE FOLDING STEEL BOOM

- Delivers 7.5 Feet of Spray Coverage
- 30 Inch Nozzle Spacing
- 62" Folding Steel Boom



3 POINT HITCH

- Category 1
- Steel Construction

30-3N-3PT-GS

Sprayer Weight	Water Weight	Sprayer W/Water Weight
60 lbs	250 lbs	310 lbs

Model #	Code #	Tank Size	Shipping Weight	Carton Size	Shipping Class	Cubic Feet	Ship Via	UPC Code
30-3N-3PT-GS	5303678	30 Gallon	60#	37.5 X 23.25 X 21.5	150	10.8	GROUND	733029124951



45 GALLON 4-NOZZLE 3 POINT SPRAYER

SPRAYER
1 YEAR
WARRANTY
PUMP
2 YEAR



HIGHFLO
HIGH PERFORMANCE

BEST IN CLASS PUMP

- 2.4 GPM High Performance 12 Volt Pump
- Maximum Pressure Of 60 PSI
- Pressure Switch Turns Pump On & Off
- Self Priming
- Can Run Dry Without Damage
- Chemical Resistant Components
- Fan Cooled To Promote Longevity & Efficiency



MANIFOLD W/PRESSURE GAUGE

- Lever Ball Valves Allow Flow & Pressure Control
- Easily Monitor Pressure With Highly Visible Gauge
- Quick Connect Fittings Enables Fast Configuration



FUSE PROTECTED 8 FT LEAD WIRE

- Helps Protect Your Vehicle Wiring
- Alligator Clips & On/Off Switch Included



DELUXE PISTOL GRIP SPRAY WAND

- Up To 40 Feet Horizontal Spray
- Up To 25 Feet Vertical Spray
- Adjustable Spray Pattern



25 FEET OF 3/8 INCH HOSE

- Chemical Resistant Rubber Hose
- Easy To Wrap For Storage
- Less Prone To Kinking



PREMIUM SPRAY TIPS

- Premium Air Induction Tips
- Reduces Chemical Drift
- Includes Anti-Drip Strainer



4-NOZZLE FOLDING STEEL BOOM

- 4-Nozzle Boom Delivers 10 Feet Of Spray Coverage
- Folding Steel Boom



3 POINT CARRIER FRAME

- Provides Strength And Support To The Tank
- Connects To The 3-Point Hitch On A Tractor
- Category 1

3PT-45-12V-4

Sprayer Weight	Water Weight	Sprayer W/Water Weight
97 lbs	384 lbs	481 lbs

Model #	Code #	Tank Size	Shipping Weight	Carton Size	Shipping Class	Cubic Feet	Ship Via	UPC Code
3PT-45-12V-4	5303244	45 Gallon	107#	40 x 24 x 26	150	14.5	LTL	733029122711



45 GALLON 3-NOZZLE BROADCAST 3 POINT SPRAYER



HIGHFLO
HIGH PERFORMANCE

BEST IN CLASS PUMP

- 4.5 GPM High Performance 12 Volt Pump
- Maximum Pressure Of 60 PSI
- Pressure Switch Turns Pump On & Off
- Self Priming
- Can Run Dry Without Damage
- Chemical Resistant Components
- Fan Cooled To Promote Longevity & Efficiency



MANIFOLD W/PRESSURE GAUGE

- Lever Ball Valves Allow Flow & Pressure Control
- Easily Monitor Pressure With Highly Visible Gauge
- Quick Connect Fittings Enables Fast Configuration



FUSE PROTECTED 8 FT LEAD WIRE

- Helps Protect Your Vehicle Wiring
- Alligator Clips & On/Off Switch Included



DELUXE PISTOL GRIP SPRAY WAND

- Up To 40 Feet Horizontal Spray
- Up To 28 Feet Vertical Spray
- Adjustable Spray Pattern



25 FEET OF 3/8 INCH HOSE

- Chemical Resistant Rubber Hose
- Easy To Wrap For Storage
- Less Prone To Kinking



PREMIUM SPRAY TIPS

- Exclusive nozzle bodies and spray tips
- Includes on/off valves & drip free nozzles
- Each nozzle can be used independently



3-NOZZLE BROADCAST BOOM

- Broadcast Boom Delivers 36 Feet Of Spray Coverage
- End Nozzles Sprays 15 Feet
- Center Nozzle Sprays 6 Feet



3 POINT CARRIER FRAME

- Provides Strength And Support To The Tank
- Connects To The 3-Point Hitch On A Tractor
- Category 1

3PT-45-12V-BL

Model #	Code #	Tank Size	Shipping Weight	Carton Size	Shipping Class	Cubic Feet	Ship Via	UPC Code
3PT-45-12V-BL	5303245	45 Gallon	116#	40 x 24 x 26	150	14.5	LTL	733029122728



65 GALLON 3-NOZZLE BROADCAST 3 POINT SPRAYER

SPRAYER
1 YEAR
WARRANTY
PUMP
2 YEAR



HIGHFLO
HIGH PERFORMANCE

BEST IN CLASS PUMP

- 4.5 GPM High Performance 12 Volt Pump
- Maximum Pressure Of 60 PSI
- Pressure Switch Turns Pump On & Off
- Self Priming - Can Run Dry Without Damage
- Fuse Protected
- Chemical Resistant Components
- Fan Cooled To Promote Longevity & Efficiency



MANIFOLD W/PRESSURE GAUGE

- Lever Ball Valves Allow Flow & Pressure Control
- Easily Monitor Pressure With Highly Visible Gauge
- Quick Connect Fittings Enables Fast Configuration



FUSE PROTECTED 8 FT LEAD WIRE

- Helps Protect Your Vehicle Wiring
- Alligator Clips & On/Off Switch Included



5 INCH TANK LID

- Lid Tethered To Tank
- Splash Prevention Flap In Lid
- Venting Reduces Tank Pressure



DELUXE PISTOL GRIP SPRAY WAND

- Up To 40 Feet Horizontal Spray
- Up To 28 Feet Vertical Spray
- Adjustable Spray Pattern



25 FEET OF 3/8 INCH HOSE

- Chemical Resistant Rubber Hose
- Easy To Wrap For Storage
- Less Prone To Kinking



PREMIUM SPRAY TIPS

- Exclusive Nozzle Bodies And Spray Tips
- Includes On/Off Valves & Drip Free Nozzles
- Each Nozzle Can Be Used Independently



3-NOZZLE BROADCAST BOOM

- Broadcast Boom Delivers 36 Feet Of Spray Coverage
- End Nozzles Sprays 15 Feet
- Center Nozzle Sprays 6 Feet



3 POINT CARRIER FRAME

- Provides Strength And Support To The Tank
- Connects To The 3-Point Hitch On A Tractor
- Category 1

3PT-65-12V-BL

Model #	Code #	Tank Size	Shipping Weight	Carton Size	Shipping Class	Cubic Feet	Ship Via	UPC Code
3PT-65-12V-BL	5303251	65 Gallon	121#	46 X 32.5 X 38.5	150	33.3	LTL	733029122643



65 GALLON 7-NOZZLE 3 POINT SPRAYER



HIGHFLO
HIGH PERFORMANCE

BEST IN CLASS PUMP

- 4.5 GPM High Performance 12 Volt Pump
- Maximum Pressure Of 60 PSI
- Pressure Switch Turns Pump On & Off
- Self Priming - Can Run Dry Without Damage
- Fuse Protected
- Chemical Resistant Components
- Fan Cooled To Promote Longevity & Efficiency



MANIFOLD W/PRESSURE GAUGE

- Lever Ball Valves Allow Flow & Pressure Control
- Easily Monitor Pressure With Highly Visible Gauge
- Quick Connect Fittings Enables Fast Configuration



FUSE PROTECTED 8 FT LEAD WIRE

- Helps Protect Your Vehicle Wiring
- Alligator Clips & On/Off Switch Included



5 INCH TANK LID

- Lid Tethered To Tank
- Splash Prevention Flap In Lid
- Venting Reduces Tank Pressure



DELUXE PISTOL GRIP SPRAY WAND

- Up To 40 Feet Horizontal Spray
- Up To 28 Feet Vertical Spray
- Adjustable Spray Pattern



25 FEET OF 3/8 INCH HOSE

- Chemical Resistant Rubber Hose
- Easy To Wrap For Storage
- Less Prone To Kinking



PREMIUM SPRAY TIPS

- TeeJet AIXR11003 Air Induction XR Flat Spray Tips
- Reduces Chemical Drift
- Includes Check Valve Strainer



7-NOZZLE FOLDING BOOM

- 7-Nozzle Boom Delivers 12 Feet Of Spray Coverage
- Folding Steel Boom



3 POINT CARRIER FRAME

- Provides Strength And Support To The Tank
- Connects To The 3-Point Hitch On A Tractor
- Category 1

3PT-65-12V-7

Model #	Code #	Tank Size	Shipping Weight	Carton Size	Shipping Class	Cubic Feet	Ship Via	UPC Code
3PT-65-12V-7	5303250	65 Gallon	137#	46 X 32.5 X 38.5	150	33.3	LTL	733029122636



65 GALLON 3-NOZZLE BROADCAST 3 POINT SPRAYERS



7-Nozzle Boom



CONSUMER
1 YEAR
WARRANTY
COMMERCIAL
90 DAYS

INCLUDED WITH 3PT-65-6R-7 & 3PT-65-6R-BL ONLY



6 ROLLER PUMP

- 9.76 GPM at 540 RPM - 18.2 GPM at 1000 RPM
- Max Pressure 300 PSI - Max Speed 1200 RPM
- Max Output 21.8 GPM



DIE CAST QUICK COUPLER

- Multi-Speed Die Cast Quick Coupler
- Easy PTO Connection



DELUXE PISTOL GRIP SPRAY WAND

- Up To 45 Feet Horizontal Spray
- Up To 30 Feet Vertical Spray
- Adjustable Spray Pattern



3 POINT CARRIER FRAME

- Provides Strength And Support To The Tank
- Connects To The 3-Point Hitch On A Tractor
- Category 1

AVAILABLE BOOM OPTIONS

3-NOZZLE BROADCAST

- 36 Foot Spray Coverage
- Each Nozzle Sprays Independently

7-NOZZLE BOOM

- 12 Feet Spray Coverage
- Folding Steel Boom

Model #	Code #	Tank Size	Shipping Weight	Carton Size	Shipping Class	Cubic Feet	Ship Via	UPC Code
3PT-65-6R-BL	5303253	65 Gallon	135#	46 X 32.5 X 38.5	150	33.3	LTL	733029122650
3 Boomless Nozzles, Includes Pump, Coupler and Spray Wand								
3PT-65-NR-BL	5303255	65 Gallon	127#	46 X 32.5 X 38.5	150	33.3	LTL	733029122698
Includes Spray Wand, Pump and Coupler NOT Included.								
3PT-65-6R-7	5303252	65 Gallon	151#	46 X 32.5 X 38.5	150	33.3	LTL	733029122629
7-Nozzle Boom, Includes Pump, Coupler and Spray Wand								
3PT-65-NR-7	5303254	65 Gallon	143#	46 X 32.5 X 38.5	-150	33.3	LTL	733029122681
Includes Spray Wand, Pump and Coupler NOT Included.								



110 GALLON 3 POINT SPRAYERS



2-Nozzle Broadcast



110 GALLON TANK

SUPERIOR TANK STRENGTH

- High Density Polyethylene Tank with UV Stabilizer
- Delivers Years of Dependable Use



6 ROLLER PUMP

- 9.76 GPM at 540 RPM - 18.2 GPM at 1000 RPM
- Max Pressure 300 PSI - Max Speed 1200 RPM
- Max Output 21.8 GPM



3 POINT CARRIER FRAME

- Connects To The 3-Point Hitch On A Tractor
- CAT I Direct, CAT II Direct, CAT II Quick, and CAT III Narrow Quick
- Provides Strength and Support To The Tank



PLUMBING KIT

- TeeJet Selector Valve and Pressure Relief/Regulator
- 22" Pro Series Spray Wand w/25' of 3/8" Hose
- Plumbing Kit



10-NOZZLE FOLDING BOOM

- 17' Coverage With 10 Nozzles
- TeeJet AIXR Nozzle – 0.3 GPM at 40 PSI With Strainer
- Teejet ChemSaver Drip-free Shutoff Nozzle Body



2-NOZZLE BROADCAST ASSEMBLY

- 32' Coverage With 2 Nozzles
- Hypro Xtender Tip FC-XT020 – 2.0 GPM at 40 PSI
- Teejet ChemSaver Drip-free Shutoff Nozzle Body

Model #	Code #	Tank Size	Shipping Weight	Carton Size	Shipping Class	Cubic Feet	Ship Via	UPC Code
3PT-110-6R-1025FX4	5303763	110 Gallon	320#	51 x 46 x 89	150	121	LTL	733029126313
Includes: 6 Roller Cast Iron Pump, Quick Coupler And 22" Pro Series Spray Wand W/ 25' Of Hose; 10-Nozzle FX4 Boom								
3PT-110-6R-2BB	5303764	110 Gallon	285#	51 x 46 x 50	150	68	LTL	733029126337
Kit Includes: 6 Roller Cast Iron Pump, Quick Coupler And 22" Pro Series Spray Wand W/ 25' Of Hose; 2 Broadcast Nozzles								
3PT-110-NR-1025FX4	5303765	110 Gallon	310#	51 x 46 x 89	150	121	LTL	733029126344
Includes: 22" Pro Series Spray Wand W/ 25' Of Hose; 10-Nozzle FX4 Boom; Plumbing Kit Assembly; Pump and Quick Coupler Not Included								



200 GALLON 3 POINT SPRAYERS



2-Nozzle Broadcast

200 GALLON TANK

SUPERIOR TANK STRENGTH

- High Density Polyethylene Tank with UV Stabilizer
- Delivers Years of Dependable Use



8 ROLLER PUMP

- 12 GPM at 540 RPM - 22.5 GPM at 1000 RPM
- Max Pressure 300 PSI - Max Speed 1200 RPM
- Multi-Speed Die Cast Quick Coupler



3 POINT CARRIER FRAME

- Connects To The 3-Point Hitch On A Tractor
- CAT I Direct, CAT II Direct, CAT II Quick, and CAT III Narrow Quick
- Provides Strength and Support To The Tank



PLUMBING KIT

- TeeJet Selector Valve and Pressure Relief/Regulator
- 22" Pro Series Spray Wand w/25' of 3/8" Hose
- Plumbing Kit



12-NOZZLE FOLDING BOOM

- 20' Coverage With 12 Nozzles
- TeeJet AIXR Nozzle – 0.3 GPM at 40 PSI With Strainer
- Teejet ChemSaver Drip-free Shutoff Nozzle Body



2-NOZZLE BROADCAST ASSEMBLY

- 32' Coverage With 2 Nozzles
- Hypro Xtender Tip FC-XT020 – 2.0 GPM at 40 PSI
- Teejet ChemSaver Drip-free Shutoff Nozzle Body

Model #	Code #	Tank Size	Shipping Weight	Carton Size	Shipping Class	Cubic Feet	Ship Via	UPC Code
3PT-200-8R-1225FX4	5303767	200 Gallon	415#	51 x 46 x 89	150	121	LTL	733029126368
Includes: 8 Roller Cast Iron Pump, Quick Coupler And 22" Pro Series Spray Wand W/ 25' Of Hose; 12-Nozzle FX4 Boom								
3PT-200-8R-2BB	5303768	200 Gallon	375#	51 x 46 x 60	150	82	LTL	733029126375
Kit Includes: 8 Roller Cast Iron Pump, Quick Coupler And 22" Pro Series Spray Wand W/ 25' Of Hose; 2 Broadcast Nozzles								
3PT-200-NR-1225FX4	5303769	200 Gallon	400#	51 x 46 x 89	150	121	LTL	733029126382
Includes: 22" Pro Series Spray Wand W/ 25' Of Hose; 12-Nozzle FX4 Boom; Plumbing Kit Assembly; Pump and Quick Coupler Not Included								



300 GALLON 3 POINT SPRAYERS



2-Nozzle Broadcast



300 GALLON
TANK

SUPERIOR TANK STRENGTH

- High Density Polyethylene Tank with UV Stabilizer
- Delivers Years of Dependable Use



8 ROLLER PUMP

- 12 GPM at 540 RPM - 22.5 GPM at 1000 RPM
- Max Pressure 300 PSI - Max Speed 1200 RPM
- Multi-Speed Die Cast Quick Coupler



3 POINT CARRIER FRAME

- Connects To The 3-Point Hitch On A Tractor
- CAT I Direct, CAT II Direct, CAT II Quick, and CAT III Narrow Quick
- Provides Strength and Support To The Tank



PLUMBING KIT

- TeeJet Selector Valve and Pressure Relief/Regulator
- 22" Pro Series Spray Wand w/25' of 3/8" Hose
- Plumbing Kit



17-NOZZLE FOLDING BOOM

- 28' Coverage With 17 Nozzles
- TeeJet AIXR Nozzle – 0.3 GPM at 40 PSI With Strainer
- Teejet ChemSaver Drip-free Shutoff Nozzle Body



2-NOZZLE BROADCAST ASSEMBLY

- 32' Coverage With 2 Nozzles
- Hypro Xtender Tip FC-XT020 – 2.0 GPM at 40 PSI
- Teejet ChemSaver Drip-free Shutoff Nozzle Body

Model #	Code #	Tank Size	Shipping Weight	Carton Size	Shipping Class	Cubic Feet	Ship Via	UPC Code
3PT-300-8R-1725FX5	5303771	300 Gallon	555#	90 x 48 x 60	150	150	LTL	733029126405
Includes: 8 Roller Cast Iron Pump, Quick Coupler And 22" Pro Series Spray Wand W/ 25' Of Hose; 17-Nozzle FX5 Boom								
3PT-300-8R-2BB	5303772	300 Gallon	455#	90 x 48 x 60	150	150	LTL	733029126412
Kit Includes: 8 Roller Cast Iron Pump, Quick Coupler And 22" Pro Series Spray Wand W/ 25' Of Hose; 2 Broadcast Nozzles								
3PT-300-NR-1725FX5	5303773	300 Gallon	540#	90 x 48 x 60	150	150	LTL	733029126429
Includes: 22" Pro Series Spray Wand W/ 25' Of Hose; 17-Nozzle FX5 Boom; Plumbing Kit Assembly; Pump and Quick Coupler Not Included								





SKID MOUNTED SPRAYERS



9-200



BRIGGS & STRATTON ENGINE

- 205cc Gas Engine
- 8 Roller Pump
- Adjustable Pressure / Pressure Gauge
- Suction Line Filter



8 ROLLER PUMP

- Max. Output to 22.1 GPM - Pressure to 200 PSI
- Max. Speed 800 RPM
- Temperature to 140° F



22" HIGH PRESSURE SPRAY WAND

- Ergonomic Design Lends To Less Fatigue
- Up To 38 Ft Horizontal & 27 Ft Vertical Spray
- Adjustable Spray Pattern
- 25' of 3/8" Hose

9-150

Model #	Code #	Tank Size	Shipping Weight	Carton Size	Shipping Class	Cubic Feet	Ship Via	UPC Code
9-150	5300431	150 Gallon	314#	79 x 41 x 49	150	91.9	LTL	733029001214

SK-110-8R & 9-200

Model #	Code #	Description	Shipping Weight	Unit Weight
SK-110-8R	5301052	110 Gallon Poly Tank Skid Sprayer	279#	229
9-200	5300655	200 Gallon Poly Tank Skid Sprayer	336#	286



150 GALLON SKID SPRAYER



BRIGGS & STRATTON ENGINE

- 127cc Gas Engine
- XR550 Engine
- 5.5 ftlb Gross Torque



EASY ACCESS TO COMPONENTS

- Direct Drive Hypo 4 Roller Pump
- 7.2 Gpm Max Flow
- 150 Psi Max Pressure
- Pressure Regulator
- Anti Vortex Suction Bulkhead



HEAVY DUTY SPRAY NOZZLE

- Rubber Grip
- Adjustable Spray Pattern



MANUAL HOSE REEL

- 100 Feet
- 600 PSI 1/2" PVC Hose

DIMENSIONS & WEIGHTS

- 60" L x 49" W x 46" H
- 175 lb Dry Weight
- 1400 lb Wet Weight

FS-150-4R

Sprayer Weight	Water Weight	Sprayer W/Water Weight
175 lbs	1400 lbs	1575 lbs

Model #	Code #	Tank Size	Shipping Weight	Carton Size	Shipping Class	Cubic Feet	Ship Via	UPC Code
FS-150-4R	5303066	150 Gallon	195#	60" x 50" x 52"	150	90.4	LTL	733029119421



200 GALLON SKID SPRAYER



QUICK COUPLER

- Stainless Steel Construction
- Allows Quick Change Of Handguns



HEAVY DUTY SPRAY NOZZLE

- Rubber Grip
- Adjustable Spray Pattern



22" HIGH PRESSURE SPRAY WAND

- Ergonomic Design Lends To Less Fatigue
- Up To 38 Ft Horizontal & 27 Ft Vertical Spray
- Adjustable Spray Pattern

Sprayer Model	Sprayer Weight	Water Weight	Sprayer W/Water Weight
LSS-235-H	396 lbs	1668 lbs	2064 lbs
LSS-240	401 lbs	1668 lbs	2069 lbs
LSS-280	396 lbs	1668 lbs	2064 lbs
LSS-280-EH	401 lbs	1668 lbs	2069 lbs
LSS-280-H	396 lbs	1668 lbs	2064 lbs

Model #	Code #	Tank Size	Shipping Weight	Carton Size	Shipping Class	Cubic Feet	Ship Via	UPC Code
LSS-240	5301259	200 Gallon	500#	79 x 41 x 49	150	91.0	LTL	733029004352
196cc Power Pro Recoil Start Engine • Three Diaphragm Pump - 580 P.S.I. - 10 G.P.M. • Hand Rewind Hose Reel • 300 Ft. of 600 P.S.I. Working Pressure PVC Hose • Tank Equipped with Agitator • Heavy Duty Pistol Grip Spray Wand • 37 Ft. Vertical Spray Height								
LSS-235-H	5301869	200 Gallon	518#	79 x 41 x 49	150	91.0	LTL	733029008787
163cc Honda Engine & Electric Hose Reel								

Model #	Code #	Tank Size	Shipping Weight	Carton Size	Shipping Class	Cubic Feet	Ship Via	UPC Code
LSS-280	5300467	200 Gallon	396#	79 x 41 x 49	150	91.0	LTL	733029001139
205cc Briggs & Stratton Recoil Start Engine • 8 Roller Pump - 0-150 P.S.I. - 7.8 G.P.M. • Hand Rewind Hose Reel 300 Ft. of 1/2" 2 Braid Rubber Hose • Tank Equipped with Agitator • Heavy Duty Pistol Grip Spray Wand								
LSS-280-H	5301865	200 Gallon	500#	79 x 41 x 49	150	91.0	LTL	733029008749
163cc Honda Engine								
LSS-280-EH	5301867	200 Gallon	518#	79 x 41 x 49	150	91.0	LTL	733029008763
163cc Honda Engine & Electric Hose Reel								



300 GALLON SKID SPRAYER



HONDA ENGINE

- 163cc Gas Engine
- Recoil Start



EASY ACCESS TO COMPONENTS

- 3 Diaphragm Pump
- Strainer
- 3/4" Single Union Ball Valve
- Pressure Gauge
- Pressure Regulator Control



AR30 PUMP

- 10 GPM
- 580 PSI



ELECTRIC HOSE REEL

- Electric Rewind Hose Reel
- Spool Kit 300 Feet
- 600 PSI, 1/2" PVC Hose



22" HIGH PRESSURE SPRAY WAND

- Ergonomic Design Lends To Less Fatigue
- Up To 38 Ft Horizontal & 27 Ft Vertical Spray
- Adjustable Spray Pattern



ADDITIONAL TEEJET 25660 LAWN GUN

- 200 PSI
- Flow Range: 1.4 to 6.5 GPM
- 3/4" FNPT

TSSK-300

Sprayer Weight	Water Weight	Sprayer W/Water Weight
586 lbs	2502 lbs	3088 lbs

Model #	Code #	Tank Size	Shipping Weight	Carton Size	Shipping Class	Ship Via	UPC Code
TSSK-300	5301337	300 Gallon	587#	103" x 48" x 46"	250	LTL	733029003164



25 GALLON PRO SERIES SPOT SPRAYER



BEST IN CLASS PUMP

- 2.2 GPM Pro Series 12 Volt Pump
- Maximum Pressure Of 100 PSI
- Ideal For Harsh Chemicals & Oil Based Chemicals With Surfactants
- Self Priming
- Can Run Dry Without Damage



HEAVY DUTY 10 FT LEAD WIRE

- Helps Protect Your Vehicle Wiring
- Alligator Clips & On/Off Switch Included



FIMCO EXCLUSIVE MEASURING LID

- Accurately Measure And Pour Chemicals
- 32 Oz Measuring Cup Is Attached To Tank Lid
- Garden Hose Port Secures Hose For Easy Filling



13" HIGH PRESSURE SPRAY WAND

- Ergonomic Design Lends To Less Fatigue
- Up To 38 Ft Horizontal & 27 Ft Vertical Spray
- Adjustable Spray Pattern



25 FEET OF 3/8 INCH HOSE

- Chemical Resistant Rubber Hose
- Easy To Wrap For Storage
- Less Prone To Kinking



CLEAR BOWL STRAINER

- 1 Inch Clear Polycarbonate
- Strain Out Particulates
- Easily See If Strainer Is Clogged

LG-25-PRO



Sprayer Weight	Water Weight	Sprayer W/Water Weight
23 lbs	209 lbs	232 lbs

Model #	Code #	Tank Size	Shipping Weight	Carton Size	Shipping Class	Cubic Feet	Ship Via	UPC Code
LG-25-PRO	5302922	25 Gallon	24#	40 x 19 x 18	150	7.9	GROUND	733029116864



25 GALLON PRO SERIES 7-NOZZLE ATV SPRAYER



BEST IN CLASS PUMP

- 4.0 GPM Pro Series 12 Volt Pump
- Maximum Pressure Of 45 PSI
- Ideal For Harsh Chemicals & Oil Based Chemicals With Surfactants
- Self Priming
- Can Run Dry Without Damage



MANIFOLD W/PRESSURE GAUGE

- Lever Ball Valves Allow Flow & Pressure Control
- 2-1/2" Liquid Filled Gauge
- Quick Connect Fittings Enables Fast Configuration



HEAVY DUTY 10 FT LEAD WIRE

- Helps Protect Your Vehicle Wiring
- Alligator Clips & On/Off Switch Included



FIMCO EXCLUSIVE MEASURING LID

- Accurately Measure And Pour Chemicals
- 32 Oz Measuring Cup Is Attached To Tank Lid
- Garden Hose Port Secures Hose For Easy Filling



CLEAR BOWL STRAINER

- 1 Inch Clear Polycarbonate
- Strain Out Particulates
- Easily See If Strainer Is Clogged



13" HIGH PRESSURE SPRAY WAND

- Ergonomic Design Lends To Less Fatigue
- Up To 38 Ft Horizontal & 27 Ft Vertical Spray
- Adjustable Spray Pattern



25 FEET OF 3/8 INCH HOSE

- Chemical Resistant Rubber Hose
- Easy To Wrap For Storage
- Less Prone To Kinking



PREMIUM SPRAY TIPS

- Premium Air Induction Tips
- Reduces Chemical Drift
- Includes Anti-Drip Strainer



7-NOZZLE FOLDING BOOM

- 7-Nozzle Boom Delivers 12 Feet Of Spray Coverage
- Folding Steel Boom



QUICK RELEASE BOOM CLAMPS

- Quickly And Easily Install Or Remove Boom
- Securely Clamps Boom Into Place

ATV-25-700-PRO



Sprayer Weight	Water Weight	Sprayer W/Water Weight
56 lbs	209 lbs	265 lbs

Model #	Code #	Tank Size	Shipping Weight	Carton Size	Shipping Class	Cubic Feet	Ship Via	UPC Code
ATV-25-700-PRO	5302927	25 Gallon	60#	56 x 20 x 21	150	13.6	LTL	733029117434



25 GALLON PRO SERIES 3-NOZZLE BROADCAST SPRAYER



BEST IN CLASS PUMP

- 4.0 GPM Pro Series 12 Volt Pump
- Maximum Pressure Of 45 PSI
- Ideal For Harsh Chemicals & Oil Based Chemicals With Surfactants
- Self Priming
- Can Run Dry Without Damage



MANIFOLD W/PRESSURE GAUGE

- Lever Ball Valves Allow Flow & Pressure Control
- 2-1/2" Liquid Filled Gauge
- Quick Connect Fittings Enables Fast Configuration



HEAVY DUTY 10 FT LEAD WIRE

- Helps Protect Your Vehicle Wiring
- Alligator Clips & On/Off Switch Included



FIMCO EXCLUSIVE MEASURING LID

- Accurately Measure And Pour Chemicals
- 32 Oz Measuring Cup Is Attached To Tank Lid
- Garden Hose Port Secures Hose For Easy Filling



CLEAR BOWL STRAINER

- 1 Inch Clear Polycarbonate
- Strain Out Particulates
- Easily See If Strainer Is Clogged



13" HIGH PRESSURE SPRAY WAND

- Ergonomic Design Lends To Less Fatigue
- Up To 38 Ft Horizontal & 27 Ft Vertical Spray
- Adjustable Spray Pattern



25 FEET OF 3/8 INCH HOSE

- Chemical Resistant Rubber Hose
- Easy To Wrap For Storage
- Less Prone To Kinking



PREMIUM SPRAY TIPS

- Exclusive Nozzle Bodies And Spray Tips
- Includes On/Off Valves & Drip Free Nozzles
- Each Nozzle Can Be Used Independently



3-NOZZLE BROADCAST BOOM

- Broadcast Boom Delivers 36 Feet Of Spray Coverage
- End Nozzles Sprays 15 Feet
- Center Nozzle Sprays 6 Feet



QUICK RELEASE BOOM CLAMPS

- Quickly And Easily Install Or Remove Boom
- Securely Clamps Boom Into Place

LG-3025-PRO



Sprayer Weight	Water Weight	Sprayer W/Water Weight
35 lbs	209 lbs	244 lbs

Model #	Code #	Tank Size	Shipping Weight	Carton Size	Shipping Class	Cubic Feet	Ship Via	UPC Code
LG-3025-PRO	5302926	25 Gallon	36#	40 x 19 x 18	150	7.9	GROUND	733029117427



45 GALLON PRO SERIES 3 POINT SPRAYER



BEST IN CLASS PUMP

- 2.2 GPM Pro Series 12 Volt Pump
- Maximum Pressure Of 100 PSI
- Ideal For Harsh Chemicals & Oil Based Chemicals With Surfactants
- Self Priming
- Can Run Dry Without Damage



MANIFOLD W/PRESSURE GAUGE

- Lever Ball Valves Allow Flow & Pressure Control
- 2-1/2" Liquid Filled Gauge
- Quick Connect Fittings Enables Fast Configuration



HEAVY DUTY 10 FT LEAD WIRE

- Helps Protect Your Vehicle Wiring
- Alligator Clips & On/Off Switch Included



FIMCO EXCLUSIVE MEASURING LID

- Accurately Measure And Pour Chemicals
- 32 Oz Measuring Cup Is Attached To Tank Lid
- Garden Hose Port Secures Hose For Easy Filling



22" HIGH PRESSURE SPRAY WAND

- Ergonomic Design Lends To Less Fatigue
- Up To 38 Ft Horizontal & 27 Ft Vertical Spray
- Adjustable Spray Pattern



25 FEET OF 3/8 INCH HOSE

- Chemical Resistant Rubber Hose
- Easy To Wrap For Storage
- Less Prone To Kinking



4-NOZZLE FOLDING BOOM

- 4-Nozzle Boom Delivers 10 Feet Of Spray Coverage
- Folding Steel Boom
- Premium Air Induction Tips



CLEAR BOWL STRAINER

- 1 Inch Clear Polycarbonate
- Strain Out Particulates
- Easily See If Strainer Is Clogged



3 POINT CARRIER FRAME

- Provides Strength And Support To The Tank
- Connects To The 3-Point Hitch On A Tractor
- Category 1

3PT-45-PRO-4



Sprayer Weight	Water Weight	Sprayer W/Water Weight
105 lbs	384 lbs	489 lbs

Model #	Code #	Tank Size	Shipping Weight	Carton Size	Shipping Class	Cubic Feet	Ship Via	UPC Code
3PT-45-PRO-4	5303246	45 Gallon	116#	40 x 24 x 26	125	14.5	LTL	733029122735



50 GALLON PRO SERIES 7-NOZZLE TRAILER SPRAYER



BEST IN CLASS PUMP

- 4.0 GPM Pro Series 12 Volt Pump
- Maximum Pressure Of 45 PSI
- Ideal For Harsh Chemicals & Oil Based Chemicals With Surfactants
- Self Priming
- Can Run Dry Without Damage



MANIFOLD W/PRESSURE GAUGE

- Lever Ball Valves Allow Flow & Pressure Control
- 2-1/2" Liquid Filled Gauge
- Quick Connect Fittings Enables Fast Configuration



HEAVY DUTY 10 FT LEAD WIRE

- Helps Protect Your Vehicle Wiring
- Alligator Clips & On/Off Switch Included



CLEAR BOWL STRAINER

- 1 Inch Clear Polycarbonate
- Strain Out Particulates
- Easily See If Strainer Is Clogged



22" HIGH PRESSURE SPRAY WAND

- Ergonomic Design Lends To Less Fatigue
- Up To 38 Ft Horizontal & 27 Ft Vertical Spray
- Adjustable Spray Pattern



25 FEET OF 3/8 INCH HOSE

- Chemical Resistant Rubber Hose
- Easy To Wrap For Storage
- Less Prone To Kinking



FIMCO EXCLUSIVE MEASURING LID

- Accurately Measure And Pour Chemicals
- 32 Oz Measuring Cup Is Attached To Tank Lid
- Garden Hose Port Secures Hose For Easy Filling

AVAILABLE BOOM OPTIONS

3-NOZZLE BROADCAST

- 36 Foot Spray Coverage
- Each Nozzle Sprays Independently

7-NOZZLE BOOM

- 12 Feet Spray Coverage
- Folding Steel Boom

LG-50-TRL-PRO



Sprayer Weight	Water Weight	Sprayer W/Water Weight
180 lbs	417 lbs	597 lbs

Model #	Code #	Tank Size	Shipping Weight	Carton Size	Shipping Class	Cubic Feet	Ship Via	UPC Code
LG-50-TRL-PRO	5302928	50 Gallon	174#	56 x 41 x 29	150	36.5	LTL	733029117441
LG-50-TRL-PRO-BL	5302930	50 Gallon	170#	56 x 41 x 29	150	36.5	LTL	733029117571



2.2 CU FT ATV DRY MATERIAL SPREADER



45 FT



COMPACT POLY HOPPER

- 2.2 CU FT Poly Hopper
- Holds Up To 145 Lbs Of Material



STAINLESS STEEL RADIAL FAN

- 6 Blade Fan
- Stainless Steel



VARIABLE SPEED CONTROL

- Control The Spread Width: 5 Feet To 45 Feet
- 20 Feet Of Wire Harness With Alligator Clips



ADJUSTABLE SLIDE GATE

- Choose The Amount Of Dry Material To Spread
- Easy To Reach Handle



RAIN / DUST COVER INCLUDED

- Protects Dry Materials From Adverse Elements
- Easy To Install And Securely Fitted



MOUNTING HARDWARE

- Mounts to ATV Rack
- Heavy Duty Steel Construction



1-1/4" Hitch
5301902

OPTIONAL HITCHES



2" Hitch
5301901

ATV-DMS-12V



APPROVED FOR:

- FERTILIZER
- SEED
- BAIT
- GRANULAR
 - INSECTICIDES
 - FUNGICIDES
 - HERBICIDES
- PELLETS
 - ICE MELTING PELLETS

Model #	Code #	Capacity	Shipping Weight	Carton Size	Shipping Class	Ship Via	UPC Code
ATV-DMS-12V	5301845	2.2 cu ft	53#	29 x 21 x 22	85	GROUND	733029008633
Optional Equipment	Code #	Carton Size	Shipping Class	Ship Via	UPC Code		
1-1/4" Receiver Hitch	5301902	25 x 13 x 3	85	GROUND	733029009081		
2" Receiver Hitch	5301901	25 x 13 x 3	85	GROUND	733029009074		
Rain Cover	5058193			GROUND	733029104014		
3 Pack Rain Cover	7771916	25 x 13 x 3		GROUND	733029107442		



2.2 CU FT ATV / UTV DRY MATERIAL SPREADER



COMPACT POLY HOPPER

- 2.2 CU FT Poly Hopper
- Holds Up To 145 Lbs Of Material



STAINLESS STEEL RADIAL FAN

- 6 Blade Fan
- Stainless Steel



12V MOTOR W/ VARIABLE SPEED CONTROL

- Control The Spread Width: 5 Feet To 45 Feet
- 20 Feet Of Wire Harness With Alligator Clips
- On/Off Switch



ADJUSTABLE SLIDE GATE

- Choose The Amount Of Dry Material To Spread
- Easy To Reach Handle



RAIN / DUST COVER

- Protects Dry Materials From Adverse Elements
- Easy To Install And Securely Fitted



2" RECEIVER ATTACHMENT

- Fits 2" Receiver on most ATVs and UTVs
- Hitch pin included

**RECEIVER HITCH AND DUST COVER
ARE INCLUDED WITH ATV-DMS-12V-2RC**

ATV-DMS-12V-2RC



APPROVED FOR:

- FERTILIZER
- SEED
- BAIT
- GRANULAR
 - INSECTICIDES
 - FUNGICIDES
 - HERBICIDES
- PELLETS
 - ICE MELTING PELLETS

Model #	Code #	Capacity	Shipping Weight	Carton Size	Shipping Class	Ship Via	UPC Code
ATV-DMS-12V-2RC	5302957	2.2 cu ft	60#	29 x 21 x 22	85	GROUND	733029119216



2.2 CU FT TRAILER DRY MATERIAL SPREADER



COMPACT POLY HOPPER

- 2.2 CU FT Poly Hopper
- Holds Up To 145 Lbs Of Potash



STAINLESS STEEL RADIAL FAN

- 6 Blade Fan
- Stainless Steel



VARIABLE SPEED CONTROL

- Control The Spread Width: 5 Feet To 45 Feet
- 20 Feet Of Wire Harness With Alligator Clips



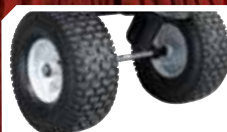
ADJUSTABLE SLIDE GATE

- Choose The Amount Of Dry Material To Spread
- Easy To Reach Handle



ADJUSTABLE TRAILER HITCH

- Change The Trailer Hitch Height To Match Your Vehicle's Hitch Height



TURF TIRES

- 15 x 6.00-6 Pneumatic Turf Tires
- 3/4 Inch Axle

DMS-TR-12V-2.2



APPROVED FOR:

- FERTILIZER
- SEED
- BAIT
- GRANULAR
 - INSECTICIDES
 - FUNGICIDES
 - HERBICIDES
- PELLETS
 - ICE MELTING PELLETS

Model #	Code #	Hopper Size	Shipping Weight	Carton Size	Shipping Class	Cubic Feet	Ship Via	UPC Code
DMS-TR-12V-2.2	5302028	2.2 Cu Ft.	108#	29 x 20 x 26	85	8.8	LTL	733029010476



5.0 CU FT TRAILER DRY MATERIAL SPREADER



LARGE POLY HOPPER

- 5.0 CU FT Poly Hopper
- Holds Up To 220 Lbs Of Potash



VARIABLE SPEED CONTROL

- Control The Spread Width: 5 Feet To 45 Feet
- 20 Feet Of Wire Harness With Alligator Clips



STAINLESS STEEL RADIAL FAN

- 6 Blade Fan
- Stainless Steel



ADJUSTABLE SLIDE GATE

- Choose The Amount Of Dry Material To Spread
- Easy To Reach Handle



TURF TIRES

- 16 x 6.50-8 Pneumatic Turf Tires
- 3/4 Inch Axle



ADJUSTABLE TRAILER HITCH

- Change The Trailer Hitch Height To Match Your Vehicle's Hitch Height

DMS-TR-12V-5.0



APPROVED FOR:

- FERTILIZER
- SEED
- BAIT
- GRANULAR
 - INSECTICIDES
 - FUNGICIDES
 - HERBICIDES
- PELLETS
 - ICE MELTING PELLETS

Model #	Code #	Hopper Size	Shipping Weight	Carton Size	Shipping Class	Cubic Feet	Ship Via	UPC Code
DMS-TR-12V-5.0	5302035	5.0 Cu Ft.	165#	40 x 44 x 36	85	36.7	LTL	733029010544



4.5 CU. FT 3 POINT DRY MATERIAL SPREADER



LARGE POLY HOPPER

- 4.5 CU FT Poly Hopper
- Holds Up To 220 Lbs Of Potash



VARIABLE SPEED CONTROL

- Control The Spread Width: 5 Feet To 45 Feet
- 20 Feet Of Wire Harness With Alligator Clips



CATEGORY 1 HITCH

- Easily Connects To Your Category 1 Tractor Hitch



STAINLESS STEEL RADIAL FAN

- 6 Blade Fan
- Stainless Steel



ADJUSTABLE SLIDE GATE

- Choose The Amount Of Dry Material To Spread
- Easy To Reach Handle

DMS-3PT-12V-4.5



APPROVED FOR:

- FERTILIZER
- SEED
- BAIT
- GRANULAR
 - INSECTICIDES
 - FUNGICIDES
 - HERBICIDES
- PELLETS
 - ICE MELTING PELLETS

Model #	Code #	Hopper Size	Shipping Weight	Carton Size	Shipping Class	Cubic Feet	Ship Via	UPC Code
DMS-3PT-12V-4.5	5302045	4.5 Cu Ft.	125#	40 x 26 x 30	85	18	LTL	733029010551



POLY & STEEL LAWN ROLLERS



STEEL LAWN ROLLER FEATURES

- 14 Gauge Steel End Cap And Drums
- Heavier Roller To Help Smooth The Yard With Less Effort

POLY LAWN ROLLER FEATURES

- Polyethylene Drum Resist Rust And Dents
- Lightweight When Empty, For Easy Transportation And Storage
- LRP-1824 Includes a Push Handle

COMMON FEATURES

- Tow Hitch
- Rounded End Caps Prevent Gouging And Will Not Leave Ruts
- Durable (1") Tow Hitch Tubes
- Common Hitch Pin Attachment For Easy Use With Any Vehicle
- Provides Level Surface To Combat Effects Of Freezing, Burrowing Animals, And Wheel Track Ruts
- Effective Packing Of New Seeding And Soil To Root Contact For Newly Laid Sod

LAWN ROLLERS

Model #	Code #	Material	Roller Size	Weight With Water	Shipping Weight	Carton Size	Shipping Class	Ship Via	UPC Code
LRP-1824	5301944	Poly	18 x 24	268	42#	32 x 20 x 18	85	GROUND	733029009296
LRP-1836	5301945	Poly	18 x 36	390	51#	44 x 20 x 18	85	GROUND	733029009302
LRP-1848	5301946	Poly	18 x 48	510	63#	57 x 20 x 18	85	GROUND	733029009319
LRP-2436	5301947	Poly	24 x 36	668	76#	44 x 25 x 25	85	GROUND	733029009326
LRP-2448	5301948	Poly	24 x 48	878	92#	56 x 25 x 25	85	LTL	733029009333
LRS-2436	5301949	Steel	24 x 36	715	163#	44 x 25 x 25	85	LTL	733029009340
LRS-2448	5301950	Steel	24 x 48	934	189#	56 x 25 x 25	85	LTL	733029009357



42" TINE DE-THATCHER



42" WIDTH

SUPERIOR STEEL CONSTRUCTION

- Folded Steel Deck
- Holds Up To 150 Lbs

10 MINUTE ASSEMBLY TIME

EASY TO ASSEMBLE

- Quick Assembly Time Of 10 Minutes
- Fewer Parts Means Easier Maintenance



22 TRIPLE COILED TINES

- Durable Triple Coiled Tine Rakes
- Heat Treated
- Cover And Clean More Ground



TRANSPORT LEVER

- Engage Or Disengage The Tine Rakes
- Easy To Access Transport Lever
- Height Adjustable

DTH-42

Model #	Code #	Width	Shipping Weight	Carton Size	Shipping Class	Cubic Feet	Ship Via	UPC Code
DTH-42	5301491	42 Inches	50#	50 x 13 x 11	150	4.2	GROUND	733029004581



42" PLUG AERATOR & 42" SPIKE AERATOR



PLG-42

Cinder Blocks Not Included



SPK-42

Cinder Blocks Not Included

42" WIDTH

SUPERIOR STEEL CONSTRUCTION

- 14 Gauge Folded Steel Deck
- Holds Up To 175 Lbs

42" WIDTH

SUPERIOR STEEL CONSTRUCTION

- 14 Gauge Folded Steel Deck
- Holds Up To 175 Lbs



24 PLUGGING POINTS

- Penetration Depth: Up To 3 Inches
- Bushings For Smooth Plugging
- Self Cleaning



144 SPIKING TIPS

- Penetration Depth: Up To 2.5 Inches
- Tines: 12 10 Inch Spike Wheels



TRANSPORT LEVER

- Engage Or Disengage The Tine Rakes
- Easy To Access Transport Lever
- Height Adjustable



TRANSPORT LEVER

- Engage Or Disengage The Tine Rakes
- Easy To Access Transport Lever
- Height Adjustable

10 MINUTE ASSEMBLY TIME

EASY TO ASSEMBLE

- Quick Assembly Time Of 10 Minutes
- Fewer Parts Means Easier Maintenance

10 MINUTE ASSEMBLY TIME

EASY TO ASSEMBLE

- Quick Assembly Time Of 10 Minutes
- Fewer Parts Means Easier Maintenance

PLG-42 & SPK-42

Model #	Code #	Width	Shipping Weight	Carton Size	Shipping Class	Cubic Feet	Ship Via	UPC Code
PLG-42	5301530	42 Inches	85#	51 x 18 x 14	150	7.5	GROUND	733029005182
SPK-42	5301531	42 Inches	85#	51 x 18 x 14	150	7.5	GROUND	733029005199



10 CU FT POLY CARTS



Shown With Push/Pull Handle Model #: TC-10-P.
Other Models Do Not Include Push/Pull Handle.

10 CU FT

DURABLE POLY CONSTRUCTION

- Strong One Piece Poly Bed Design



EASY DUMP RELEASE

- Simple Lever Releases Cart Load

600 LBS MAX

WEIGHT CAPACITY

- Fully Assembled Welded Pedestal & Under Carriage Frame



MOLDED-IN FEATURES

- Easily Add Dividers To Separate Sections



TURF TIRES

- 8 x 4.8/400 Pneumatic Turf Tires
- Metal Hub
- Maximum Speed 4 MPH

TC-10-P, TC-10P-EC, & TC-10P-EC-B

Model #	Code #	Box Size	Shipping Weight	Carton Size	Shipping Class	Cubic Feet	Ship Via	UPC Code
TC-10-P	5301461	10 Cu. Ft.	75#	49 x 36 x 14	85	14.3	GROUND	733029003614
TC-10P-EC**	5301841	10 Cu. Ft.	575 Pallet	-	85	-	LTL	733029008589
TC-10P-EC-B	5302051	10 Cu. Ft.	75	49 x 36 x 14	85	14.5	GROUND	733029010605

**Available only in bulk packaging of 8 carts



15 CU FT ATV POLY CARTS



15 CU FT

DURABLE POLY CONSTRUCTION

- Strong One Piece Poly Bed Design
- Bed Dimensions: 48" L x 40" W x 14" H

700 LBS MAX

WEIGHT CAPACITY

- Fully Assembled Welded Pedestal & Under Carriage Frame



TURF TIRES

- 16 x 6.5-8 Turf Tires With Metal Hub
- 3/4" Solid Steel Axle
- Maximum Speed 4 MPH



EASY STEP DUMP RELEASE

- Simple Step Lever Releases Cart Load



MOLDED-IN FEATURES

- Easily Add Dividers To Separate Sections

TC-15-HP

Model #	Code #	Box Size	Shipping Weight	Carton Size	Shipping Class	Cubic Feet	Ship Via	UPC Code
TC-15-HP	5302027	15 Cu Ft.	85#	48 x 40 x 14	85	16.5	LTL	733029010469



10 CU FT STEEL CART & 17 CU FT STEEL CART



TC-10-18



TC-17

10 CU FT

SOLID STEEL CONSTRUCTION

- Gauge Of Steel: 18 Gauge Body; 16 Gauge Tailgate
- Removable Tailgate With Slotted Base

750 LBS MAX

WEIGHT CAPACITY

- Fully Assembled Welded Pedestal & Under Carriage Frame



EASY DUMP RELEASE

- Simple Lever Releases Cart Load



TURF TIRES

- 8 x 4.8/400 Pneumatic Turf Tires
- Metal Hub
- Maximum Speed 4 MPH

17 CU FT

SOLID STEEL CONSTRUCTION

- Gauge Of Steel: 16 Gauge Body; 16 Gauge Tailgate
- Removable Tailgate With Slotted Base

1500 LBS MAX

WEIGHT CAPACITY

- Fully Assembled Welded Pedestal & Under Carriage Frame



EASY DUMP RELEASE

- Simple Lever Releases Cart Load



TURF TIRES

- 16 x 6.5-8 Turf Tires With Metal Hub
- 3/4" Solid Steel Axle
- Maximum Speed 4 MPH

TC-10-18 & TC-17

Model #	Code #	Box Size	Shipping Weight	Carton Size	Shipping Class	Cubic Feet	Ship Via	UPC Code
TC-10-18	5301546	10 Cu. Ft.	108#	44 x 34 x 14	85	12.2	GROUND	733029005243
TC-17	5301397	17 Cu. Ft.	200#	61 x 39 x 17	85	23.4	LTL	733029003331



4 WHEEL STEERABLE 17 CU FT STEEL CART



17 CU FT

DURABLE STEEL CONSTRUCTION

- Gauge Of Steel: 16 Gauge Body;
16 Gauge Tailgate
- Removable Tailgate With Slotted Base

2000 LBS MAX

WEIGHT CAPACITY

- Fully Assembled Welded Pedestal &
Under Carriage Frame



4 WHEEL STEERABLE CART

- Steerable Front Wheels Makes Moving
Around The Farm Or Yard Easy



TURF TIRES

- 16 x 6.5-8 Turf Tires With Metal Hub
- 3/4" Solid Steel Axle
- Maximum Speed 4 MPH

TC-17-4

Model #	Code #	Box Size	Shipping Weight	Carton Size	Shipping Class	Cubic Feet	Ship Via	wUPC Code
TC-17-4	5301398	17 Cu. Ft.	227#	61 x 39 x 17	85	23.4	LTL	733029003348

FIMCO 4 FT PLANOGRAM LAYOUT



**CONTACT YOUR REGIONAL PARTS MANAGER TODAY FOR A
CUSTOM FIMCO PLANOGRAM THAT SUITS *YOUR NEEDS***

PACKAGED & REPLACEMENT PARTS

WIRING



Part #	OEM Number	Description	UPC Code	Part Size	Part Weight
7771784	5278114	96" Lead Wire Assembly Alligator Clips	733029101617	3-5/8" x 6-5/8"	.48 lbs
7771786	5275053	96" Lead Wire Assembly Cigarette Lighter Adapter	733029101648	3-5/8" x 6-5/8"	.30 lbs
7771883	5273212	5' Extension for Lead Wire Assembly	733029102690	3-5/8" x 6-5/8"	.26 lbs
7771938	-	Remote Control On/Off Switch 12 Volt	733029103536	4-1/4" x 7"	.27 lbs

TANK PARTS



Part #	OEM Number	Description	UPC Code	Part Size	Part Weight
7771950	5020524	Sprayer Hose 15 Feet	733029106859	10" x 10"	1 lb 13 oz
7772150	5020527	Sprayer Hose 25 Feet	733029122148	10" x 10"	.19.2 lbs
7771882	5053096, 5117334	Wand Clips (2 Pack)	733029102683	2-5/8" x 4-3/8"	.10 lbs
7772149	5133276	Hose Wrap	733029122131	3-5/8" x 6-5/8"	0.1 lbs
7771825	5168832, 5168833	Drain Cap and Tether	733029102195	2-5/8" x 4-3/8"	.04 lbs
7771826	5058188	Tank Lid	733029102201	8-3/4" x 9-3/4"	.58 lbs
7772014	-	Multi Lid	733029113665	7" x 7-1/4"	.68 lbs
7771592	5116242	Tank Strainers 2 Qty	733029100863	2-5/8" x 4-3/8"	.01 lbs
7772147	5116454	3/8" Hose Barb Strainer	733029122117	3-1/2" x 5-1/2"	.05 lbs
7772099	5116417	1" In Line Strainer Assy 1/2" MNPT	733029118110	3-5/8" x 6-5/8"	.03 lbs
7771873	5143419	Single Shutoff Valve	733029102527	3-1/2" x 5-1/2"	.05 lbs
7772138	-	3" x 6" Tank Repair Kit	733029121134	4 3/8" x 8 3/4"	0.1 lbs
5169262	-	15 Gallon Tank w/ Lid & Drain Cap	733029102874	34" x 14" x 16"	12 lbs
5169264	-	25 Gallon Tank w/ Lid & Drain Cap	733029102881	40" x 16" x 19"	20 lbs

PUMP PARTS



Part #	OEM Number	Description	UPC Code	Part Size	Part Weight
7771824	5168832, 5168833, 5168836	Replacement Fittings for High Flo 2.1/2.4 GPM Pump	733029102379	3-1/2" x 5-1/2"	.10 lbs
7771831	5168832, 5168833	Pump Port (1) 1/2" Hose Barb, (1) 1/2" MPT	733029102393	3-1/2" x 5-1/2"	.05 lbs
7771913	5168836	Pump Port Fitting 3/8" Hose barb QTY 2	733029102829	2-5/8" x 4-3/8"	.05 lbs
7771830	5051162	Pump Port Clips 2 QTY	733029102386	2-5/8" x 4-3/8"	.01 lbs
7772088	5095202	Pump Feet for 1.0/1.2 and 2.1/2.4 GPM Pumps	733029116086	3-1/2" x 5-1/2"	.10 lbs
7771833	5143544	Pump Check Valve 2.1 and 2.4 GPM	733029102416	3-5/8" x 5-1/2"	.10 lbs
7771878	5168824	Pump Check Valve 3.8 and 4.5 GPM	733029102645	5-3/8" x 5-1/2"	.15 lbs
7772101	5164271	Pump Pressure Switch 1.2 and 4.5 GPM 60 PSI	733029118691	2-5/8" x 4-3/8"	.09 lbs
7771880	5157202	Pump Pressure Switch 2.1 and 2.4 GPM 60 PSI	733029102669	2-5/8" x 4-3/8"	.10 lbs

PACKAGED & REPLACEMENT PARTS

PLUMBING PARTS



Part #	OEM Number	Description	UPC Code	Part Size	Part Weight
7771967	See Kit	Manifold Kit	733029116079	8-3/4" x 9-3/4"	.09 lbs
7772087	See Kit	Manifold Repair Kit	733029116079	3-1/2" x 5-1/2"	.09 lbs
7771803	5167006	Pressure Gauge 0-60 PSI 2"	733029101914	3-1/2" x 5-1/2"	.24 lbs
7771804	5167007	Pressure Gauge 0-100 PSI 2"	733029101921	3-1/2" x 5-1/2"	.12 lbs
7771802	5167004	Pressure Gauge 0-200 PSI 2"	733029101907	3-1/2" x 5-1/2"	.12 lbs
7772086	5167097	Pressure Gauge 0-100 PSI 2" Back Mount	733029111067	3-5/8" x 6-5/8"	.13 lbs
7771778	5167031	Pressure Gauge 0-100 PSI 2 1/2" Liquid Filled	733029101495	3" x 5-1/8"	.45 lbs
7772130	5100959	Bypass Tube Kit Replacing 5100803	733029120618	11" x 5.25" x 1.75"	.20 lbs
7772131	5100960	Bypass Tube Kit Replacing 5149152	733029120625	10" x 9" x 2.5"	.35 lbs
7772132	5100961	Bypass Tube Kit Replacing 5100809	733029120632	6.75" x 3.75" x 1.75"	.10 lbs
7772133	5100962	Bypass Tube Kit Replacing 5149157	733029120656	6.75" x 5" x 1.5"	.15 lbs
7772134	5100963	Bypass Tube Kit Replacing 5100822	733029120663	6.75" x 5" x 1.5"	.15 lbs
7772135	5100964	Bypass Tube Kit Replacing 5100804	733029120670	6.75" x 5" x 1.5"	.15 lbs
7771829	5143204	3/4" GHT "Y" Valve	733029102270	3" x 5-1/8"	.10 lbs
7771342	5143335	Y Valve Zinc Coated GHT	733029002129	3" x 5-1/2"	.30 lbs
7771874	See Kit	PKG/Spot Spray Repair Kit	733029102584	3-3/4" x 5-1/2"	.16 lbs
7771876	See Kit	PKG/TRLR-ATV Repair Kit	733029102607	4-3/4" x 6-1/2"	.39 lbs

BOOM PARTS



Part #	OEM Number	Description	UPC Code	Part Size	Part Weight
7771953	5056113	Nozzle Body "L" 3/8" Hose Barb Quick Connect	733029107398	3-1/2" x 5-1/2"	.08 lbs
7771954	5056114	Nozzle Body Tee 3/8" Hose Barb Quick Connect	733029107404	3-1/2" x 5-1/2"	.08 lbs
7771955	5056115	Nozzle Body Cross 3/8" Hose Barb Quick Connect	733029107411	3-1/2" x 5-1/2"	.08 lbs
7771956	5046251, 5106157	Fimco Black Nozzle Caps w/ Gaskets - 2 Pk	733029107428	3-1/2" x 5-1/2"	.05 lbs
7771766	5011657, 5046219	Nozzle Body Caps with Gasket 2 Qty	733029101358	3-1/2" x 5-1/2"	.08 lbs
7772145	5053110	Boom / Nozzle Retaining Clip - 2 PK	733029122094	2-5/8" x 4-3/8"	.05 lbs
7772148	5277923	1" Steel Boom Clamp - 2 PK	733029122124	5-3/8" x 5-1/2"	.05 lbs
7772146	5051114	1/2" Hose Clamps - 4 PK	733029122100	2 5/9" x 4 3/8"	.04 lbs
7771767	5018274	Replacement Tips TF-VP3 2 Qty	733029101365	2-5/8" x 4-3/8"	.01 lbs
7772089	5018371	Replacement Tips AIXR11002VP 2 Qty	733029116093	2-5/8" x 4-3/8"	.03 lbs
7771952	5018371	Replacement Tips AIXR11002VP 4 Qty	733029107381	2-5/8" x 4-3/8"	.03 lbs
7771769	5018265	Replacement Tips TP8002VP 2 Qty	733029101389	2-5/8" x 4-3/8"	.01 lbs
7771768	5018328	Nozzles - TP11002VP - 2 PK	733029101372	2-5/8" x 4-3/8"	.03 lbs
7771770	5116019	Nozzle Strainers - Old Style - 2 PK	733029101396	2-5/8" x 4-3/8"	.03 lbs
7772098	5143543	50 Mesh Check Valve Strainers - 2 PK	733029117519	2-5/8" x 4-3/8"	.05 lbs
7771884	5275123	Complete Replacement Boomless Nozzle Center	733029102706	3-5/8" x 6-5/8"	.31 lbs
7771885	5275122	Complete Replacement Boomless Nozzle Left or Right	733029102713	3-5/8" x 6-5/8"	.38 lbs
7771781	5274861	Replacement Cap/Tip for Left/Right Boomless Nozzle	733029101525	2-5/8" x 4-3/8"	.05 lbs
7771891	5088024	Boomless Nozzle Knob and Diaphragm	733029102775	2-5/8" x 4-3/8"	.04 lbs
7771875	See Kit	PKG/Boom Repair Kit	733029102591	3-3/4" x 5-1/2"	.19 lbs

ATV QUICK RELEASE BOOM KITS



**7 FT
SPRAY
COVERAGE**



2-NOZZLE BOOM KIT



ATVBK-200-QR

TF-VP3 PREMIUM
WIDE ANGLE
INCLUDES NEW
ANTI-DRIP STRAINER



MANIFOLD INCLUDED



**8 FT
SPRAY
COVERAGE**



5-NOZZLE BOOM KIT



ATVBK-500-QR

AIXR PREMIUM
AIR INDUCED
INCLUDES NEW
ANTI-DRIP STRAINER



MANIFOLD INCLUDED



**12 FT
SPRAY
COVERAGE**



7-NOZZLE BOOM KIT



ATVBK-700-QR

AIXR PREMIUM
AIR INDUCED
INCLUDES NEW
ANTI-DRIP STRAINER



MANIFOLD INCLUDED

ATV QUICK RELEASE BOOM KITS



7-NOZZLE DELUXE BOOM KIT



ATVBK-710-QR

**12 FT
SPRAY
COVERAGE**



**AIXR PREMIUM
AIR INDUCED**
INCLUDES CHEMSAVER
DRIP-FREE SHUT OFF



MANIFOLD INCLUDED



3-NOZZLE BROADCAST BOOM KIT



ATVBK-3025-QR

**36 FT
SPRAY
COVERAGE**



**XTENDER END TIPS
& CENTER SPRAY TIP**
INCLUDES DRIP-FREE
SHUT OFF VALVES



MANIFOLD INCLUDED

Model #	Code #	Number Of Nozzles	Weight	Carton Size	Shipping Class	Cubic Feet	Ship Via	UPC Code
ATVBK-200-QR	5302339	2	18	54 x 11 x 6	150	2.0	GROUND	733029110770
- Minimum Pump Requirement - 1.2 G.P.M. DOES NOT INCLUDE TANK AND PUMP.								
ATVBK-500-QR	5302338	5	28	54 x 11 x 6	150	2.0	GROUND	733029110763
- Minimum Pump Requirement - 2.4 G.P.M. DOES NOT INCLUDE TANK AND PUMP.								
ATVBK-700-QR	5302337	7	29	53 x 11 x 6	150	2.0	GROUND	733029110756
- Minimum Pump Requirement - 2.4 G.P.M. DOES NOT INCLUDE TANK AND PUMP.								
ATVBK-710-QR	5302336	7	40	53 x 11 x 6	150	2.0	GROUND	733029110749
- Minimum Pump Requirement - 4.5 G.P.M. DOES NOT INCLUDE TANK AND PUMP.								
ATVBK-3025-QR	5302334	3	18	54 x 11 x 6	150	2.0	GROUND	733029110725
- Minimum Pump Requirement - 4.5 G.P.M. DOES NOT INCLUDE TANK AND PUMP.								

KITS INCLUDE: Pressure gauge, manifold & hose to convert your spot sprayer into an ATV sprayer.

BOOM ASSEMBLIES

2 NOZZLE BOOM

The BK-1 boom assembly is for use on trailer sprayers with pressure controls & pressure gauge.



Model #	Code #	Description	Wt.
BK-1	5300954	2 Nozzle boom, w/brackets & feeder hose, 80" Coverage	14

5 NOZZLE BOOM

The BK-5 boom assembly is for use on trailer sprayers with pressure controls & pressure gauge.



Model #	Code #	Description	Wt.
BK-5	5300955	5 Nozzle, 3 section break-away boom, w/brackets & feeder hose, 100" Coverage	26

7 NOZZLE BOOM

The BK-70 boom assembly is for use on 3-point, ATV, and trailer sprayers with pressure controls & pressure gauge.



Model #	Code #	Description	Wt.
BK-70	5301197	7 Nozzle, 3 section break-away boom, 140" Coverage	28

3-NOZZLE BROADCAST BOOM

The BK-3025BL boom assembly is for use on 3-point, ATV, and trailer sprayers.

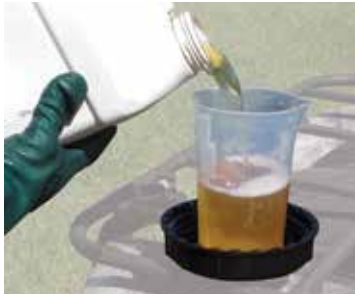


Model #	Code #	Description	Wt.
BK-3025BL	5301289	3-Nozzle Broadcast Boom, Up to 30 ft Coverage	28



MULTI-LID

- Food grade, 32 ounce measuring cup is attached to tank lid
- Garden hose port secures hose for safe and easy filling with one person
- Fits sprayers with a 5" tank lid
- Made in the USA



Model #	Code #	Carton Size	Shipping Class	UPS Able	UPC Code
Multi-Lid	7772014	7" x 7" x 7.5"	85	2#	733029113665



12 VOLT ON/OFF WIRELESS REMOTE CONTROL

CONTROLS ALL 12 VOLT PRODUCTS UP TO 20 AMPS!

FEATURES:

- Wireless Remote
- Convenient Keychain Clip
- 2-way, 2 Wire Flat Molded Connectors, 16 Gauge Wire

Model #	Description	UPC Code	Part Size
7771938	12 Volt On/Off Wireless Remote Control	733029103536	4.25" x 7"

ON/OFF SWITCH KIT

Can be used on all sprayers with 12 volt electric pumps. Connects between battery and pump wiring and turns sprayer "on" or "off" from the operators seat.



5278017



5278114



5275053



5273212



5277040

Code #	Description	Wt.
5278017	96" Wire W/Switch (5 Amp) Only For Use With 1.2 GPM Pumps	1
5278114	96" Wire W/Switch (15 Amp)	1
5275053	10' Wire Assy W/ Lighter Adapter & Switch	1
5273212	5' Extension Cable	1
5277040	10' Heavy Duty Wire Assy	1

12 VOLT PUMPS



- 1.0 GPM 12 Volt Electric Pump
- Maximum Pressure Of 60 PSI
- Pressure Switch Turns Pump On & Off
- Self Priming
- Can Run Dry Without Damage

1.0 G.P.M.

Boxed Part #	Individual Part #	Volts	Amps	Demand Switch or Relief Valve	Max Pressure	GPM	UPC Code
5151118	5281560	12	4	Demand Switch	60	1.0	733029120083



HIGH-FLO HIGH PERFORMANCE

- 1.2 G.P.M. High Performance 12 Volt Pump
- 60 PSI Max Pressure
- Quick Connect Hose Fittings
- In-Line Fuse Protection
- 12 Volt Dc Power
- Self Priming - 8 Ft To 14 Ft
- Runs Dry Without Damage
- Chemical Resistant Elastomers
- 3/8" Hose Barbs
- Fan Cooled Motor

- DEMAND SWITCH MODELS operate only when liquid flow is required. Pump and motor stop instantly when discharge is closed.
- Diaphragm design eliminates troublesome shaft seal.
- Pump can be run indefinitely without damage.
- Ball bearing drive - assures longer pump life.
- Excellent self-priming capability.
- Santoprene diaphragms and viton valves are standard.
- Maximum temperature of pumped liquid 130°F.
- Permanent magnet motor - long life brushes.
- Fuse Protected
- Built-In cooling fan

2 YEAR
WARRANTY

Boxed Part #	Individual Part #	Volts	Amps	Demand Switch or Relief Valve	Max Pressure	GPM	UPC Code
5151086	5281370	12	4.0	Demand Switch	60	1.2	733029118134 (Boxed)

1.2 G.P.M.



HIGH-FLO HIGH PERFORMANCE

- 2.4 G.P.M. High Performance 12 Volt Pump
- 60 PSI Max Pressure
- Quick Connect Hose Fittings
- In-Line Fuse Protection
- 12 Volt Dc Power
- Self Priming - 8 Ft To 14 Ft
- Runs Dry Without Damage
- Chemical Resistant Elastomers
- 3/8" Hose Barbs
- Fan Cooled Motor

- DEMAND SWITCH MODELS operate only when liquid flow is required. Pump and motor stop instantly when discharge is closed.
- Diaphragm design eliminates troublesome shaft seal.
- Pump can be run indefinitely without damage.
- Ball bearing drive - assures longer pump life.
- Excellent self-priming capability.
- Santoprene diaphragms and viton valves are standard.
- Maximum temperature of pumped liquid 130°F.
- Permanent magnet motor - long life brushes.
- Fuse Protected
- Built-In cooling fan

2 YEAR
WARRANTY

Boxed Part #	Individual Part #	Volts	Amps	Demand Switch or Relief Valve	Max Pressure	GPM	UPC Code
5151087	5281371	12	8.0	Demand Switch	60	2.4	733029118073 (Boxed)

2.4 G.P.M.



HIGH-FLO HIGH PERFORMANCE

- Internal Bypass Pump; 2.4 G.P.M.
- Pumps Until Power Is Shut Off
- 60 P.S.I. Max Pressure
- 8 Amp Draw
- Quick Connect Hose Fittings

- DEMAND SWITCH MODELS operate only when liquid flow is required. Pump and motor stop instantly when discharge is closed.
- Diaphragm design eliminates troublesome shaft seal.
- Pump can be run indefinitely without damage.
- Ball bearing drive - assures longer pump life.
- Excellent self-priming capability.
- Santoprene diaphragms and viton valves are standard.
- Maximum temperature of pumped liquid 130°F.
- Permanent magnet motor - long life brushes.
- Fuse Protected
- Built-In cooling fan

2 YEAR
WARRANTY

Boxed Part #	Individual Part #	Volts	Amps	Demand Switch or Relief Valve	Max Pressure	GPM	UPC Code
5151089	5281373	12	8.0	Relief Valve	60	2.4	733029118097 (Boxed)

2.4 G.P.M. BYPASS

12 VOLT PUMPS



HIGH FLO HIGH PERFORMANCE

- 4.5 G.P.M. High Performance 12 Volt Pump
- 60 PSI Max Pressure
- Quick Connect Hose Fittings
- In-Line Fuse Protection
- 12 Volt Dc Power
- Self Priming - 8 Ft To 14 Ft
- Runs Dry Without Damage
- Chemical Resistant Elastomers
- 3/8" Hose Barbs
- Fan Cooled Motor

- DEMAND SWITCH MODELS operate only when liquid flow is required. Pump and motor stop instantly when discharge is closed.
- Diaphragm design eliminates troublesome shaft seal.
- Pump can be run indefinitely without damage.
- Ball bearing drive - assures longer pump life.
- Excellent self-priming capability.
- Santoprene diaphragms and viton valves are standard.

- Maximum temperature of pumped liquid 130°F.
- Permanent magnet motor - long life brushes.
- Fuse Protected
- Built-In cooling fan

**2 YEAR
WARRANTY**

4.5 G.P.M.

Boxed Part #	Individual Part #	Volts	Amps	Demand Switch or Relief Valve	Max Pressure	GPM	UPC Code
5151088	5281372	12	11.0	Demand Switch	60	4.5	733029118080 (Boxed)



HIGH FLO PRO SERIES PROFESSIONAL GRADE

HFP-2.2 G.P.M.

- 100 P.S.I.
- Viton Valves
- Geolast Diaphragm
- Two Pin Connector 6" Long
- Upgraded components - Ideal For:
 - Harsh Chemicals & Oil Based Chemicals With Surfactants
- Heavy Duty Motor

HFP 2.2 G.P.M.

Boxed Part #	Individual Part #	Volts	Amps	Demand Switch or Relief Valve	Max Pressure	GPM	UPC Code
5281325	5151075	12	4	Demand Switch	100	2.2	733029117601



HIGH FLO PRO SERIES PROFESSIONAL GRADE

HFP-4.0 G.P.M.

- 45 P.S.I.
- Viton Valves
- Geolast Diaphragm
- Two Pin Connector 6" Long
- 1/2"-14NPT Male Threads
- Upgraded components - Ideal For:
 - Harsh Chemicals & Oil Based Chemicals With Surfactants
- Heavy Duty Motor

HFP 4.0 G.P.M.

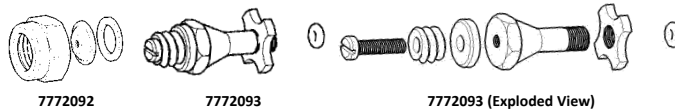
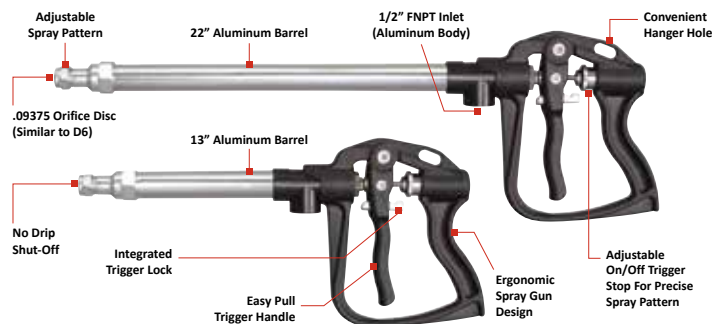
Boxed Part #	Individual Part #	Volts	Amps	Demand Switch or Relief Valve	Max Pressure	GPM	UPC Code
5281326	5151073	12	11	Demand Switch	45	4.0	733029117618

SPRAY WANDS

22" & 13" PRO SERIES LONG RANGE ERGONOMIC SPRAY WANDS

Other Features

- 600 PSI
- 8 GPM
- Chemical Resistant Construction



Spray Distance

- 38' Max Horizontal
- 27' Max Vertical

FIMCO Code #	Description	UPC Code
5163136	22" Long Range Pro Series Spray Wand	733029115782
5163137	13" Long Range Pro Series Spray Wand	733029115799
7772092	End Cap Replacement Kit (End Cap, Gasket, Orifice Disc)	733029116901
7772093	Repair Kit (O-Ring, Valve Core Assembly)	733029116918

DELUXE SPRAY WAND



- Flow Rates Up to 5 G.P.M.; 300 P.S.I.
- Comfortable Pistol Grip Spray Wand
- 18" Aluminum Wand
- 3/8" Hose Barb
- Adjustable Pattern Tip (Cone to Straight Stream)

MFG Part #	Description	Weight	UPC Code
5273959	Spray Wand w/X-26 Tip	0.8 lbs	733029100306
5018331	X-26 Tip Only (Brass)	0.09 lbs	733029104649

ERGONOMIC SPRAY WAND



- Overall Wand Length is 29"
- Metal Extension is 19" Long w/30° Offset Tip
- Hose Shank Connection is 3/8"
- Tip Has Adjusting Pattern From Cone Spray To Straight Stream
- Maximum Operating Pressure is 100 P.S.I.
- Ergonomic Handle With Trigger Locks For Continuous Operation

FIMCO Code #	Description	Weight	UPC Code
5163155	Ergonomic Spray Wand	0.5 lbs	733029124982

STANDARD LEVER SPRAY WAND



- Overall Wand Length is 29"
- Metal Extension is 19" Long w/30° Offset Tip
- Hose Shank Connection is 3/8"
- Tip Has Adjusting Pattern From Cone Spray To Straight Stream
- Maximum Operating Pressure is 100 P.S.I.
- Trigger Locks For Continuous Operation

FIMCO Code #	Description	Weight	UPC Code
5163100	29" Trigger Wand	0.5 lbs	733029101136
5018330	X-26 Tip Only (Poly)	0.02 lbs	733029105622
7771944	Economy Spray Wand With Hangtag	0.5 lbs	733029104304

SPRAY WANDS

LEVER GRIP SPRAY WAND



- Up to 25 Feet Horizontal Spray
- Up to 15 Feet of Vertical Spray
- Adjustable Spray Pattern

Code #	Description	Wt.	
5163154	Value Lever Grip Spray Wand	0.3 lbs	733029122216

LAWN GUARD SPRAY WAND



- 3.6V Rechargeable Lithium Ion Spray Wand
- Built-In Pump
- 65 Minute Run Time / Charge
- 10 ft Vertical Spray, 20 ft Horizontal Spray



Model #	Code #	UPC Code
7772105	7772105	733029120212

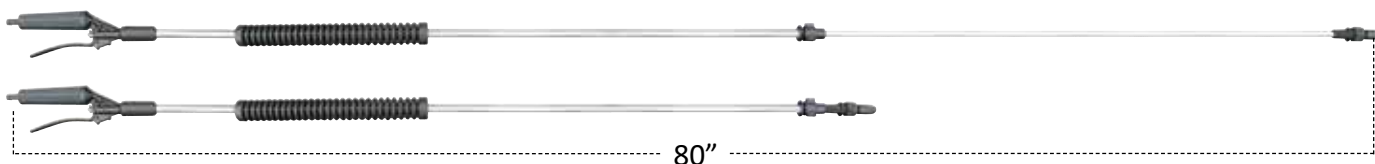
HIGH-FLO SPRAY WAND

- 25 Feet of hose gives you the length necessary to reach tight areas, around buildings and other obstacles
- Deluxe pistol grip spray wand delivers up to 40 feet of horizontal spray and 25 feet of vertical spray and features an ergonomic polymer handle and precision brass tip.



Code #	Description	Wt.	
7771827	Standard Spray Wand W/15' Of Spiral Hose	1.21 lbs	733029102249

TELESCOPIC SPRAY WAND - GREAT FOR TREES, HOUSES AND OTHER HARD TO REACH PLACES!



80"

- Hose Shank Connection is 3/8"
- Tip Has Adjusting Pattern From Cone Spray To Straight Stream
- Maximum Operating Pressure is 100 P.S.I.
- Trigger Locks For Continuous Operation

FIMCO Code #	Description	Weight	UPC Code
5163117	Telescoping Wand	1.25 lbs.	733029102218

HOSE REELS

HOSE REEL ATTACHMENT FOR 45/65 UTV SPRAYER

- Designed to work exclusively with your FIMCO UTV sprayers
- Heavy duty construction provides years of trouble free use
- Pivoting spool with locking feature allows you to rotate your hose and lock it in place, unwinding your hose in the direction you need



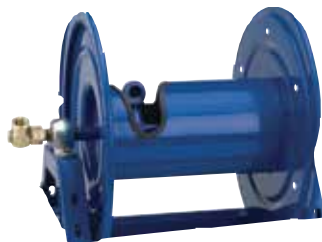
MFG Part #	FIMCO Part #	Inlet/Outlet	Reel Capacity In Feet	PSI
UTV-HR-50	5302886	3/8" Hose Barb 50' of 3/8" Hose	50' of 3/8"	300

GENERAL PUMP HAND CRANK REEL



MFG Part #	FIMCO Part #	Inlet/Outlet	Reel Capacity In Feet	PSI
D30006	5277374	3/8" NPT-M 3/8" NPT-F	200' of 3/8"	3500

COX 12 VOLT ELECTRIC REEL (Gear Driven)



MFG Part #	FIMCO Part #	Inlet/Outlet	Reel Capacity In Feet	PSI
1125-4-325E	5274305	1/2"	450' of 3/8" 325' of 1/2"	3000

LOW PRESSURE COX REEL

- Heavy duty 1/4" plate steel support post and mounting plate
- 1" Oil-lite self lubricating bearing
- Solid 1" steel center support shaft
- Full flow swivel joint
- Adjustable arm guide (wall, floor, ceiling and pit)
- Cartridge style spring motor
- 4 Roller non-sag hose guide
- Eight position locking ratchet



MFG Part #	FIMCO Part #	Hose ID	Hose OD	Ft	PSI
P-LP-350	5274152	3/8"	21/32"	50	300
P-LP-415	5274153	1/2"	27/32"	15	300

COX HAND CRANK REEL



MFG Part #	FIMCO Part #	Inlet/Outlet	Reel Capacity In Feet	PSI
1125-4-325	5274304	1/2"	450' of 3/8" 325' of 1/2"	3000

1526-17-18

- 1/2 FNPT Inlet & Outlet
- Holds 300 Ft of 1/2" ID. x 7/8" OD. Hose
- 3000 PSI Max. Pressure
- Temperature Range -20° to 400°
- Optional Guide Rollers & Mounting Bracket



MANUAL REWIND HOSE REELS

Model #	Shipping Bundle #	Description	Weight
1526-17-18	5272182	Hannay Manual Rewind Hose Reel Crank is Permanently Attached to the Reel Axle on this Model	38

OPTIONS

Model #	Shipping Bundle #	Description	Weight
5274195-BLK	5274195	Mounting Stand for Hose Reels	

TANK ADDITIVES



SPRAYER TANK NEUTRALIZER & CLEANER

Fimco's Tank Neutralizer cleaning agent is specifically designed to clean sprayers. Removes dirt, scale and rust from spray booms and tanks, as well as neutralizing the chemical action of spray chemicals previously used in your equipment. A completely soluble powder.

Recommended to be used for flushing sprayers after each use. Reduces corrosion in tanks and pumps.

Code #	Description	Weight	UPC Code
5173029	2 lb. Can (Packed 12 per Case)	2 lbs	733029102362



SCHABEN'S SUPER FOAM

Long lasting foam. Holds up to hard water, highwinds and high temperatures. 160 to 1 concentrate

FIMCO Code #	Description
SUPERFOAM1 (5173032)	1 Gallon
SHP-SUPERFOAM4-KIT	4-1 Gallon



SUPER SIGNAL BLUE

Super concentrated, blue spray pattern indicator formulated to provide visual evidence of where a spray application has been made Broadcast: 16 to 32 oz/100 gallons Handheld: 1 to 2 oz/3 gallons

FIMCO Code #	Description
7772152	1 Quart
SUPERSIGNALBLUE/2.5	2.5 Gallons



FOAM COLORANTS

Pour it in your foamer along with your foam concentrate. It leaves a bright colored mark long after the foam is gone. Mix Rate = 2 oz to 10 gallons.

FIMCO Code #	Description
7772151	Pink (32 oz)

WEIGHTS & MEASUREMENTS

Model #	Item #	UPC	Length	Width	Height	Weight	Quantity per Pallet
LWN-GRD-4	5303079	733029119995	14	11	23	11	44
LG-5-P	5302165	733029002211	21	18	23	33	12
LG-8-P	5302164	733029007841	19	17	23	26	16
LG-10-EC	5301547	733029005250	31	14	13	12	28
15-SP-GS-B	5303643	733029124753	48	34	40	140	18
15-SP-GS	5303644	733029124760	32	15	16	15	24
LG-15-EC	5301302	733029003058	34	16	15	18	24
LG-13-P	5300393	733029001009	34	16	14	20	24
LG-14-PM	5301144	733029002549	34	16	15	21	24
LG-14-SM	5301145	733029002556	34	16	15	21	24
LG-20-EC	5301548	733029005267	38	18	15	20	15
25-SP-GS	5303645	733029124777	32	15	21	20	15
LG-25-EC	5301378	733029003195	39	19	16	22	15
LG-29-P	5300632	733029001443	39	19	16	24	15
LG-28-S	5301063	733029002310	39	19	16	25	15
LG-25-PM	5301146	733029002563	39	19	16	24	15
LG-25-SM	5301147	733029002570	39	19	16	25	15
LG-25-HV	5301222	733029002990	39	19	16	25	15
LG-30-EC	5301561	733029005472	42	20	17	26	12
LG-30-S	5301478	733029004246	42	20	17	26	12
LG-40-DLX	5302186	733029107336	30	28	24	30	12
LG-45-SS	5303260	733029123800	38	24	22	32	8
LG-65-HP	5303623	733029123824	45	26	24	40	4
BR-15-SP-EC	5303152	733029121561	34	16	15	18	18
BR-25-SP-EC	5303153	733029120755	32	15	21	23	12
BR-40-SP-EC	5303154	733029121578	30	28	24	30	12
15-2N-TRL-GS	5303198	733029122056	40	16	16	42	15
LG-20-TRL	5302316	733029110008	36	20	17	46	8
25-2N-TRL-GS	5303199	733029122063	40	16	22	55	8
25-3N-TRL-GS	5303649	733029124784	40	16	22	43	12
LG-30-TRL	5302317	733029110015	45	20	20	58	8
TRL-45-12V-4	5303635	733029124135	40	24	26	103	6
TRL-65-12V-BL	5303638	733029124470	47	35	29	144	2
TRL-65-12V-7	5303637	733029124463	47	35	29	153	2
TRL-65-4R-BL	5303640	733029124494	74	27	31	214	2
TRL-65-4R-7	5303639	733029124487	74	27	31	230	2
FT-200-4R	5303634	733029123909	86	62	60	500	1
ATVTS-200-4R-BL	5303223	733029122339	86	62	60	550	1
15-2N-ATV-GS	5303197	733029122049	34	16	16	26	15
ATV-15-2-QR	5302318	733029110022	34	16	15	26	10
ATV-20-2-QR	5302319	733029110039	38	18	15	27	10
25-3N-ATV-GS	5303648	733029124814	40	16	22	30	12
ATV-25-700-QR	5302320	733029110046	56	19	21	56	8
ATV-25-71-QR	5302321	733029110053	56	19	21	65	8
LG-25-BL-QR	5302323	733029110077	39	19	16	37	10
LG-3025-QR	5302322	733029110060	39	19	16	35	10
45-3N-UTV-GS	5303650	733029124791	38	24	22	45	8
UTV-45-BL	5302865	733029114822	37	31	18	68	4
UTV-45-7	5302864	733029114839	47	31	19	85	4
65-5N-UTV-GS	5303651	733029124807	45	26	24	56	4
UTV-65-BL	5302843	733029114327	48	36	19	85	4
UTV-65-7	5302830	733029114433	48	36	19	97	4
UTV-HR-50	5302886	733029115003	34	17	14	32	12
30-3N-3PT-GS	5303678	733029124951	38	24	22	60	6
3PT-45-12V-4	5303244	733029122711	40	24	26	90	6
3PT-45-12V-BL	5303245	733029122728	40	24	26	80	6
3PT-65-12V-BL	5303251	733029122643	47	33	39	121	2

WEIGHTS & MEASUREMENTS

Model #	Item #	UPC	Length	Width	Height	Weight	Quantity per Pallet
3PT-65-12V-7	5303250	733029122636	47	33	39	137	2
3PT-65-NR-BL	5303255	733029122698	47	33	39	127	2
3PT-65-NR-7	5303254	733029122681	47	33	39	143	2
3PT-65-6R-BL	5303253	733029122650	47	33	39	135	2
3PT-65-6R-7	5303252	733029122629	47	33	39	151	2
3PT-110-NR-1025FX4	5303765	733029126344	51	46	89	310	1
3PT-110-6R-2BB	5303764	733029126337	51	46	50	285	1
3PT-110-6R-1025FX4	5303763	733029126313	51	46	89	320	1
3PT-200-NR-1225FX4	5303769	733029126382	51	46	89	400	1
3PT-200-8R-2BB	5303768	733029126375	51	46	60	375	1
3PT-200-8R-1225FX4	5303767	733029126368	51	46	89	415	1
3PT-300-NR-1725FX5	5303773	733029126429	90	48	60	540	1
3PT-300-8R-2BB	5303772	733029126412	90	48	60	455	1
3PT-300-8R-1725FX5	5303771	733029126405	90	48	60	555	1
SK-110-8R	5301052	733029004260	79	41	49	229	1
9-150	5300431	733029001214	79	41	49	264	1
FS-150-4R	5303066	733029119421	60	50	52	195	1
9-200	5300655	733029001603	79	41	49	270	1
LSS-280	5300467	733029001139	79	41	49	396	1
LSS-280-H	5301865	733029008749	79	41	49	235	1
LSS-280-EH	5301867	733029008763	79	41	49	235	1
LSS-240	5301259	733029004352	79	41	49	330	1
LSS-235-H	5301869	733029008787	79	41	49	235	1
TSSK-300	5301337	733029003164	105	54	54	587	1
LG-25-PRO	5302922	733029116864	32	15	21	25	12
ATV-25-700-PRO	5302927	733029117434	56	16	27	60	6
LG-3025-PRO	5302926	733029117427	38	15	27	36	12
3PT-45-PRO-4	5303246	733029122735	40	24	26	90	6
LG-50-TRL-PRO	5302928	733029117441	56	41	29	174	2
LG-50-TRL-PRO-BL	5302930	733029117571	56	41	29	170	2
ATVBK-200-QR	5302339	733029110770	46	6	6	10	24
ATVBK-500-QR	5302338	733029110763	55	11	6	23	24
ATVBK-700-QR	5302337	733029110756	55	11	6	27	24
ATVBK-710-QR	5302336	733029110749	55	11	6	31	24
ATVBK-3025-QR	5302334	733029110725	55	11	6	11	24
TC-10-18	5301546	733029005243	44	34	14	103	5
TC-17	5301397	733029003331	61	39	17	200	4
TC-17-4	5301398	733029003348	61	39	17	227	4
TC-10-P	5301461	733029003614	49	36	14	75	7
TC-10P-EC-B	5302051	733029010605	49	36	14	70	6
TC-10-EC	5301841	733029008589	49	36	60	575	8
TC-15-HP	5302027	733029010469	48	40	15	85	5
DTH-42	5301491	733029004581	50	13	11	50	18
SPK-42	5301531	733029005199	51	18	14	85	10
PLG-42	5301530	733029005182	51	18	14	85	10
LRP-1824	5301944	733029009296	32	20	18	42	10
LRP-1836	5301945	733029009302	44	20	18	51	8
LRP-1848	5301946	733029009319	57	20	18	63	8
LRP-2436	5301947	733029009326	44	25	25	76	3
LRP-2448	5301948	733029009333	56	25	25	84	3
LRS-2436	5301949	733029009340	44	25	25	163	3
LRS-2448	5301950	733029009357	56	25	25	189	3
ATV-DMS-12V	5301845	733029008633	29	21	22	53	9
ATV-DMS-12V-2RC	5302957	733029119216	29	21	22	55	9
DMS-TR-12V-2.2	5302028	733029010476	29	20	26	69	9
DMS-TR-12V-5.0	5302035	733029010544	40	44	36	110	2
DMS-3PT-12V-4.5	5302045	733029010551	40	26	36	90	2

***** Commercial and Residential Shipping Rates Vary *****

Doesn't include pallet weight

OWNER'S MANUAL

Model: UTV-65-7-PRO (5303071)

(65 Gallon Lawn & Garden UTV Sprayer w/7-Nozzle Boom)

Professional Grade Pump (4.0 GPM):
Ideal for Harsh Chemicals & Oil
Based Chemicals with Surfactants

Long Range 13" PRO SERIES Handgun
38' Horizontal Spray & 27' Vertical

Roundup® Ready

Technical Specifications

- 65 Gal. Corrosion-Resistant Polyethylene Tank
- 13" Pro Series Handgun w/25 Ft. Handgun Hose
- 7-Nozzle Boom Assembly (140' Spray Coverage)
- Drift Reducing Corrosion-Resistant Nylon Nozzles w/"No-Drip" Check Valve Strainers
- Adjustable Boom Height
- Pro Series 4.0 GPM, 45 PSI, 12 Volt Diaphragm Pump
- Multi-Lid to accurately measure and dispense

General Information

Thank you for purchasing this product. This manual is to assist you in operating and maintaining your UTV sprayer.



WARNING: To reduce the risk of injury, the user must read and understand the operator's manual before using this product.



WARNING: Cancer and Reproductive Harm
www.P65Warnings.ca.gov

BEFORE RETURNING THIS PRODUCT FOR ANY REASON, PLEASE

1-800-831-0027

MONDAY-FRIDAY, 8:00 AM TO 5:00 PM CST

If you should have a question or experience a problem with your Fimco Industries Product: Visit our website @ www.fimcoindustries.com or call the Toll free technical support representatives will be happy to help you. In most cases a customer service representative can resolve the problem over the phone.

To obtain prompt, efficient service, always remember to give the following information....

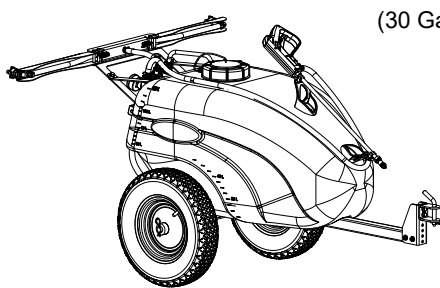
- Correct Part Description and/or Part Number and Serial Number
- Part descriptions and numbers can be obtained from the illustrated parts list section(s) of this manual.

Retain a copy of your receipt for your unit, as it will be required to validate any warranty service.

Warranted against manufacturer or workmanship defects from date of purchase with copy of receipt:

Homeowner Usage: One Year

Commercial Usage: 90 Days



General Information

Thank you for purchasing this product. The purpose of this manual is to assist you in operating and maintaining your lawn & garden Trailer sprayer.



WARNING: To reduce the risk of injury, the user must read and understand the operator's manual before using this product.



WARNING: Cancer and Reproductive Harm
www.P65Warnings.ca.gov

BEFORE RETURNING THIS PRODUCT FOR ANY REASON, PLEASE CALL

1-800-831-0027

MONDAY-FRIDAY, 8:00 AM TO 5:00 PM CST

If you should have a question or experience a problem with your Fimco Industries Product: Visit our website @ www.fimcoindustries.com or call the Toll free technical support representatives will be happy to help you. In most cases a customer service representative can resolve the problem over the phone.

To obtain prompt, efficient service, always remember to give the following information....

- Correct Part Description and/or part number
- Part descriptions and numbers can be obtained from the illustrated parts list section(s) of this manual.

Retain a copy of your receipt for your unit, as it will be required to validate any warranty service.

Warranted against manufacturer or workmanship defects from date of purchase with copy of receipt:

Homeowner Usage: Sprayer-One Year and Pump-Two Years.

Commercial Usage: Sprayer and Pump-90 Days.



OWNER'S MANUAL

Model: LG-30-TRL (5302317)

(30 Gallon Lawn & Garden Trailer Sprayer)

Technical Specifications

- 30 Gal. Corrosion-Resistant Polyethylene Tank
- 12 Volt Diaphragm Pump, 2.4 GPM - 60 PSI
- 15 Ft. Handgun Hose
- 25 Ft. max. vertical throw, 40 Ft. horizontal throw
- 2-Nozzle Break-Away Boom Assembly (80' Spray Coverage)
- Corrosion-Resistant Nylon Nozzles
- Check Valve Strainers, 50 Mesh, 5 PSI
- Easy access drainage port (Complete Drain Out)
- Front forward gun and hose wrap for easier access from transport vehicle
 - Heavy Duty 16" tires
 - Wide Axle
 - Streamlined tank design for compact storage and shorter turning radius

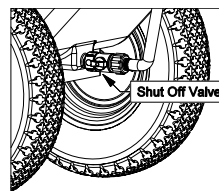
Caution: Always check the vehicle load rating before using the sprayer. The loaded weight of this sprayer and boom assembly is approx.: 320 lbs. when the tank is full.



NOTE: Maximum Speed - 5 MPH
Refer to vehicle's manual for towing instructions

Assembly Instructions

- Make sure the contents of the sprayers carton match the items shown on page 2 of the manual.
- Follow the steps on pages 3 & 4 to properly assemble the sprayer.



IMPORTANT:

This sprayer comes with an On/Off (shut-off) valve located at the inlet location of the tank, towards the underside. You must make sure the valve is in the "open" position before using your sprayer.

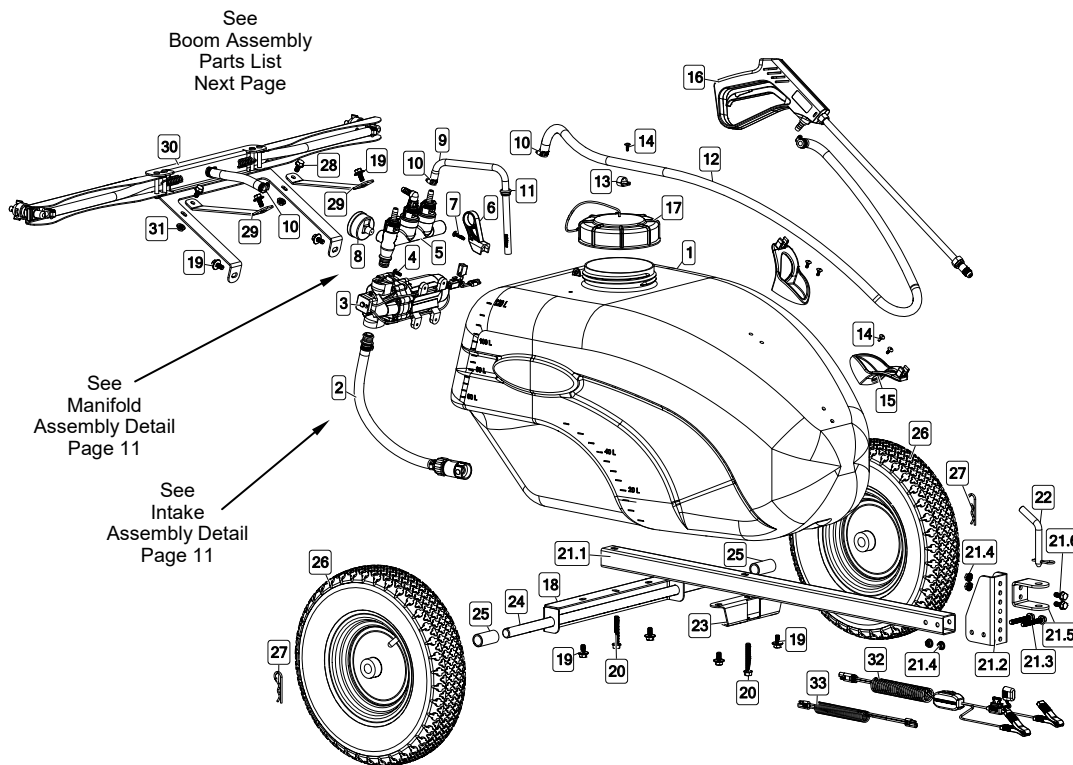


www.fimcoindustries.com

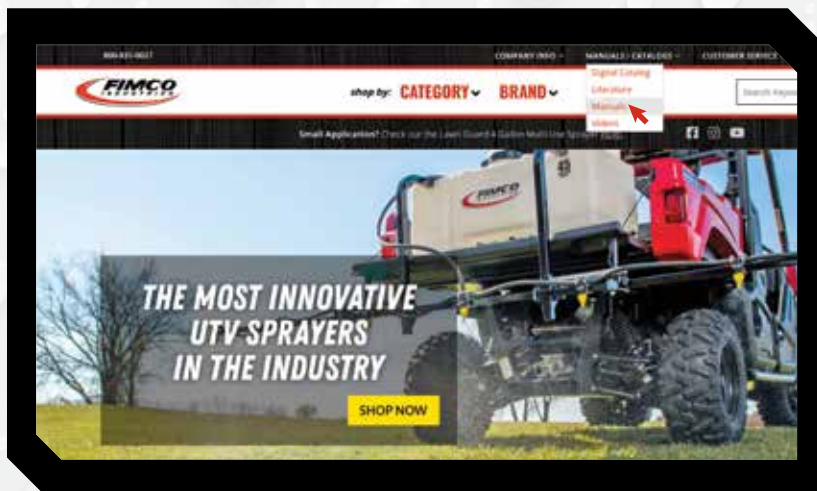
1000 FIMCO Lane, P.O. Box 1700, North Sioux City, SD 57049
Toll Free Phone: 800-831-0027 : Toll Free Fax: 800-494-0440
[5194822] (02/20)]

Page 1

PRODUCT MANUALS & PARTS BREAKDOWNS



Exploded View/Parts List: LG-30-TRL (5302317)



**FIMCO PRODUCT MANUALS
& PARTS BREAKDOWNS
CAN BE FOUND AT
FIMCOINDUSTRIES.COM/MANUALS**

SPRAYING INFORMATION

Useful Formulas

$$\begin{aligned} \text{GPM (Per Nozzle)} &= \frac{\text{GPA} \times \text{MPH} \times \text{W}}{5,940} \\ \text{GPM (Per Nozzle)} &= \frac{\text{GAL}/1000\text{FT}^2 \times \text{MPH} \times \text{W}}{136} \\ \text{GPA} &= \frac{5,940 \times \text{GPM (Per Nozzle)}}{\text{MPH} \times \text{W}} \\ \text{GAL}/1000\text{FT}^2 &= \frac{136 \times \text{GPM (Per Nozzle)}}{\text{MPH} \times \text{W}} \end{aligned}$$

GPM – Gallons Per Minute
 GPA – Gallons Per Acre
 GAL/1000FT² – Gallons Per 1000 Square Feet
 MPH – Miles Per Hour
 W – Nozzle spacing (in inches) for broadcast spraying
 – Spray width (in inches) for single nozzle, band spraying or boomless spraying
 – Row spacing (in inches) divided by the number of nozzles per row for directed spraying

Nozzle Spacing

If the nozzle spacing on your boom is different than those tabulated, multiply the tabulated GPA coverages by one of the following factors.

20"	
Other Spacing (Inches)	Conversion Factor
8	2.5
10	2
12	1.67
14	1.43
16	1.25
18	1.11
22	.91
24	.83
30	.66

Useful Formulas for Roadway Applications

$$\text{GPLM} = \frac{60 \times \text{GPM}}{\text{MPH}} \quad \text{GPM} = \frac{\text{GPLM} \times \text{MPH}}{60}$$

GPLM = Gallons Per Lane Mile

Note: GPLM is not a normal volume per unit area measurement. It is a volume per distance measurement. Increases or decreases in lane width (swath width) are not accommodated by these formulas.

Measuring Travel Speed

Measure a test course in the area to be sprayed or in an area with similar surface conditions. Minimum lengths of 100 and 200 feet are recommended for measuring speeds up to 5 and 10 MPH, respectively. Determine the time required to travel the test course. To help ensure accuracy, conduct the speed check with a partially loaded (about half full) sprayer and select the engine throttle setting and gear that will be used when spraying. Repeat the above process and average the times that were measured. Use the following equation or the table at right to determine ground speed.

$$\text{Speed (MPH)} = \frac{\text{Distance (FT)} \times 60}{\text{Time (seconds)} \times 88}$$

Speeds

Speed in MPH	Time Required in SECONDS to Travel a Distance of:		
	100 Feet	200 Feet	300 Feet
1.0	68	136	205
1.5	45	91	136
2.0	34	68	102
2.5	27	55	82
3.0	23	45	68
3.5	19	39	58
4.0	17	34	51
4.5	15	30	45
5.0	14	27	41
5.5	—	25	37
6.0	—	23	34
6.5	—	21	31
7.0	—	19	29
7.5	—	18	27
8.0	—	17	26
8.5	—	16	24
9.0	—	15	23

30"	
Other Spacing (Inches)	Conversion Factor
26	1.15
28	1.07
32	.94
34	.88
36	.83
38	.79
40	.75
42	.71
44	.68

40"	
Other Spacing (Inches)	Conversion Factor
28	1.43
30	1.33
32	1.25
34	1.18
36	1.11
38	1.05
42	.95
44	.91
48	.83

Miscellaneous Conversion Factors

One Acre = 43,560 Square Feet
 = 43.56 1000FT² Blocks
 = 0.405 Hectare

One Hectare = 2.471 Acres

One Gallon Per Acre
 = 2.9 Fluid Ounces per 1000FT²
 = 9.35 Liters Per Hectare

One Gallon Per 1000FT² = 43.56 GPA

One Mile = 5,280 Feet
 = 1,610 Meters
 = 1.61 Kilometers

One Gallon = 128 Fluid Ounces
 = 8 Pints
 = 4 Quarts
 = 3.79 Liters
 = 0.83 Imperial Gallon

One Pound Per Square Inch
 = 0.069 bar
 = 6.896 Kilopascals
 One Mile Per Hour
 = 1.609 Kilometers Per Hour

Suggested Minimum Spray Heights

The nozzle height suggestions in the table below are based on the minimum overlap required to obtain uniform distribution. However, in many cases, typical height adjustments are based on a 1 to 1 nozzle spacing to height ratio. For example, 110° flat spray tips spaced 20 inches apart are commonly set 20 inches above the target.

		(Inches)			
		20"	30"	40"	
TeeJet® Standard, TJ	65°	22–24"	33–35"	NR*	
TeeJet, XR, TX, DG, TJ	80°	17–19"	26–28"	NR*	
TeeJet, XR, DG, TT, TTI, TJ, DGTJ, AI, AIXR	110°	16–18"	20–22"	NR*	
FullJet®	120°	10–18"***	14–18"***	14–18"***	
FloodJet® TK, TF	120°	14–16"***	15–17"***	18–20"***	

* Not recommended.

** Nozzle height based on 30° to 45° angle of orientation (see page 284 of catalog).

*** Wide angle spray tip height is influenced by nozzle orientation. The critical factor is to achieve a double spray pattern overlap.

SPRAYING INFORMATION

SIZE SELECTION OF SPRAY TIP OR NOZZLE

Based on the chemical manufacturer's recommendations on GPA application rates and nozzle types, a suitable spray tip size is chosen from the catalog tabulations. Since all the tabulations are based on spraying water, which weighs 8.34 lbs. per USA gallon, conversion factors must be used when spraying solutions which are heavier or lighter than water. Using conversion factors from the tables below multiply by the catalog tabulated GPM and GPA rates - to arrive at the values for the solution to be sprayed.

Weight of solution	Specific Gravity	Conversion Factors
7.0 lbs. per gallon	.84	.92
8.0 lbs. per gallon	.96	.98
8.34 lbs. per gallon - WATER	1.00	1.00
9.0 lbs. per gallon	1.08	1.04
10.0 lbs. per gallon	1.20	1.10
10.65 lbs. per gallon - 28% nitrogen	1.28	1.13
11.0 lbs. per gallon	1.32	1.15
12.0 lbs. per gallon	1.44	1.20
14.0 lbs per gallon	1.68	1.30

BEFORE YOU GO INTO THE FIELD

Check all your equipment - make certain that all components are clean including the tank, pump, control valves, check valves, hoses, boom, strainers, nozzles, and spray tips.

WARNING: never use a metal object in cleaning nozzle orifices. Use a plastic or wooden probe.

Check the flow rate from all nozzles using a master pressure gauge mounted in the boom close to the nozzles. (After the test remove the master pressure gauge and plug the connection). While this nozzle flow test is being conducted, check the pressure reading on the rig pressure gauge to compare its reading to the pressure at the nozzles. The flow rates can be determined from the flow charts contained in this catalog. Remember, the catalog tabulations are based on pressures at the nozzles.

NOTE: If the ball type check valves are used, the actual nozzle pressure will be approximately 5 P.S.I. lower than the gauge reading, depending on spring rating and flow rate.

CHOICE AND CARE OF SPRAY EQUIPMENT

All the factors in today's spraying application, including chemical costs, pollution and driftage control, point to the importance of choosing the proper spray equipment and maintaining it in an efficient operating order. Therefore, the original purchased equipment should be made of materials which resist corrosion and wear such as stainless steel spray tips. Since usage of spray nozzles usually brings about orifice clogging problems, erosion, etc., it is very important that the tips be cleaned after each operation, and tested before using again. Finally even when using precision spray tips, it is necessary to control all the other factors in the spraying application - such as rig speed, spraying pressure, spray height, etc., in order to place the proper amount of chemicals in the proper areas. An established routine of proper maintenance will soon pay for itself.

AFTER SPRAYING

Rinse And Clean All The Spraying equipment - including the spray tips, being careful not to use a metal probe in the orifice. This cleaning routine is especially important after spraying wettable powders. Wash spray tips thoroughly with water or cleaning solution (appropriate for chemical sprayed). Blow out orifice clean and dry. If orifice remains clogged, clean it with a fine bristle (not wire) brush or with a toothpick. Do not damage the orifice. Water - rinse and dry tips before storing.



AGRICULTURAL CHEMICALS CAN BE DANGEROUS.
IMPROPER SELECTION OR USE CAN SERIOUSLY
INJURE PERSONS, ANIMALS, PLANTS, SOIL, OR OTHER PROPERTY. BE SAFE:
SELECT THE RIGHT CHEMICAL
FOR THE JOB. HANDLE IT WITH CARE. FOLLOW THE INSTRUCTIONS ON THE
CONTAINER LABEL AND
INSTRUCTIONS FROM THE EQUIPMENT MANUFACTURER.

Westward Parts offers the most comprehensive range of products to meet the needs of all agricultural and industrial customers.



Agriculture Parts

- Bearings, Seals, Flanges, O-Rings
- 3 Point Hitch Parts or Tillage Tools
- PTO Drives, Adapters, Yokes, Crosses
- Canvas, Swather Parts, Canvas Repair
- Combine Repair Parts
- Harrow Parts, Pickup & Harrow Tines
- Pickup Reel Parts
- Cutting Parts & Guards, Ag Accessories

Sprayer Parts

- Pumps & Couplers
- Valves, Manual & Electric
- Tips, Strainers, Filters
- Nozzle Bodies, Caps, Boom Clamps
- Hose, Fittings, Cam Locks
- Handguns
- Pressure Washer Parts
- Booms, Tanks, Accessories



Estate Equipment

- Cameras & Accessories
- Fencing Equipment
- Hay & Bale Handling Equipment
- Lawn & Garden
- Material Movement
- Estate Sprayers & Accessories
- Tillage Equipment
- Water, Transfer & Trash Pumps



Industrial Parts

- Chain, V-Belts, Chain Tools
- Bearings, Seals, Flanges, O-Rings
- Sheaves, Pulleys, Sprockets, Weld-ons
- Hardware, Drawpins, Wire Rope, Lubricants
- PTO Drives, Adapters, Yokes, Crosses
- Hubs, Wheels, Spindles, Casters
- Belting Seals and Shields
- Hydraulic Fittings, Couplers, Cylinders

1-888-937-7278



**YOUR SOURCE FOR
SPRAYER PARTS &
ACCESSORIES**



WESTWARD PARTS



**2024 / SPRAYER
CATALOGUE**

RED DEER, ALBERTA
6517 - 67 Street
Red Deer, AB T4P 1A3
Fax: 1-800-661-4508

REGINA, SASKATCHEWAN
201 Henderson Drive
Regina, SK S4N 7E2
Fax: 1-800-721-2977

WINNIPEG, MANITOBA
1435 St. James Street
Winnipeg, MB R3H 0W9
Fax: 1-800-257-8338

Phone 1-888-937-7278
www.westwardparts.com