



KX7 Concaves

For select models of Case IH & John Deere combines

KX7 concaves feature a patented box design with its unique angled bars to meet the crop head-on. Inclusive of MaxThresh™ and MaxRound™ options, these concaves not only deliver a better thresh, but also increase airflow disruption for greater capacity, improved combine productivity, and grain-on-grain threshing. KX7 concaves provide more immediate threshing, so you can finish the job faster.

The unique design results in many end user benefits, including:

- Significantly improved grain quality
- Dramatically cleaner samples
- Decreased rotor loss - approximately 80% less than traditional concaves
- 10 - 15% improved capacity and productivity
- Little to no plugging, even in high-moisture conditions
- Decreased fuel consumption

At half the width of most traditional concaves, KX7 concaves allow for greater customization of threshing configurations to specific field and crop conditions. The smaller design also allows for easier installation.

KX7 also offers the option of replacing individual boxes for maintenance or threshing purposes, a feature that is ideal for areas with rocky soil where an ingested rock could lead to the replacement of an individual box versus an entire concave assembly. These concaves have been found most effective in hard-to-thresh conditions and wet or high-wear environments.

KX7 MaxThresh concaves come standard with our exclusive Tungstrong™ wear enhancement on the threshing bars. This goes beyond the heat treating available on other extended wear concaves, as Tungstrong is metallurgically bonded to the base material and will not chip off. MaxRound concaves are also reinforced with heat treated separation bars.

All KX7 concaves are designed to fit the models listed without modification. Kondex manufactures all components following stringent quality assurance and ISO9001 guidelines. Kondex also utilizes robotic, pulse welding for accuracy and consistency. Concaves then undergo both visual inspection and analysis by certified welders, as well as a more thorough coordinate measuring machine testing - a process that measures and compares thousands of points on the final product to manufacturing specifications to ensure an accurate fit. Beyond this, metallurgical examination ensures the quality of the base materials and weld fusion.



KONDEX®

Part Number	Description	Make	Models
COMBA1-L05	Case IH Mid Series Front Ramp	Case IH	Case IH Mid Series Models: 1680, 1682, 1688, 2188, 2377, 2388, 2577, 2588, 5088, 5130, 5140, 5150, 6088, 6130, 6140, 6150, 7088, 7130, 7140, 7150
COMBA1-R05	Case IH Mid Series Maxround		
COMBA1-X05	Case IH Mid Series Std Maxthresh		
COMBA1-R55	Case IH Flagship LH Maxround w/Ramp	Case IH	Case IH Flagship Models: 7010AFX, 7120, 7230, 8010AFX, 8120, 8230, 9120, 9230
COMBA1-X45	Case IH Flagship RH Std Maxthresh		
COMBA1-X55	Case IH Flagship LH Std Maxthresh		
COMBA1-R15	Case IH Flagship RH Maxround	Case IH	Case IH Flagship Models: 7010AFX, 7120, 7230, 7240, 7250, 8010AFX, 8120, 8230, 8240, 8250, 9120, 9230, 9240, 9250
COMBA1-R25	Case IH Flagship LH Maxround		
COMBA1-X15	Case IH Flagship RH Std Maxthresh		
COMBA1-X25	Case IH Flagship LH Std Maxthresh		
COMBA2-L02	JD Front Ramp KX7	John Deere	John Deere Models: S550/S650, S660, S670, S680, S690, S760, S770, S780, S790, 9650 STS, 9660 STS, 9670 STS, 9750 STS, 9760 STS, 9770 STS, 9860 STS, 9870 STS
COMBA2-R05	JD Maxround KX7		
COMBA2-X05	JD Standard Maxthresh KX7		
COMBA2-X06	JD Small Hole Maxthresh KX7		

(Refer to following pages for information on quantities required)

KX7 concaves are customized to best match various crops and conditions. Use the Kondex configuration link below to help determine the right concaves and components to achieve your best harvest.

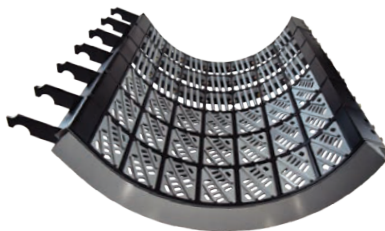
<https://www.kondex.com/crop-customization.php>



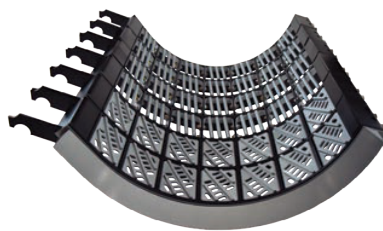
KX7 Concaves for Case IH: Mid Series

MODELS: 1680, 1682, 1688, 2188, 2377, 2388, 2577, 2588, 5088, 5130, 5140, 5150, 6088, 6130, 6140, 6150, 7088, 7130, 7140, 7150

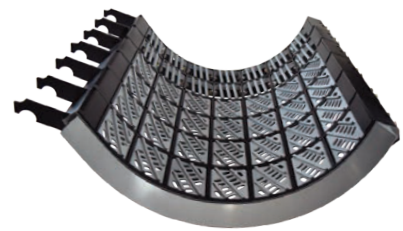
Description	Standard Configuration				Tough-Thresh Configuration				ThreshStart™			
	Full Kit	Individual Components			Full Kit	Individual Components			Kit	Individual Components		
	Part No.	Part No.	Qty	Installation	Part No.	Part No.	Qty	Installation	Part No.	Qty	Part No.	Installation
Cereals	716-039	BA1-L05	1	Front Lip	716-042	BA1-L05	1	Front Lip	716-059	1	BA1-L05	Front Lip
		BA1-X05	3	Rows 1 - 3		BA1-X05	4	Rows 1 - 4		2	BA1-X05	Rows 1 - 2
		BA1-R05	3	Rows 4 - 6		BA1-R05	2	Rows 5 - 6				
Small Seed	716-041	BA1-L05	1	Front Lip	716-039	BA1-L05	1	Front Lip	716-059	1	BA1-L05	Front Lip
		BA1-X05	2	Rows 1 - 2		BA1-X05	3	Rows 1 - 3		2	BA1-X05	Rows 1 - 2
		BA1-R05	4	Rows 3 - 6		BA1-R05	3	Rows 4 - 6				
Corn/ Soybeans					716-043	BA1-L05	1	Front Lip	716-063 (alternate: 716-059)	1	BA1-L05	Front Lip
						BA1-X05	1	Row 1		1	BA1-X05	Row 1
						BA1-R05	5	Rows 2 - 6		1	BA1-R05	Row 2



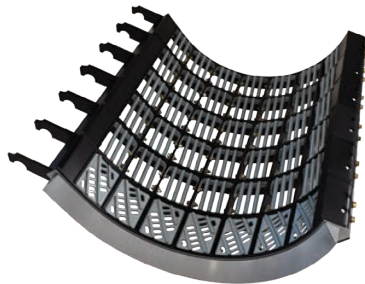
716-039
Standard Cereal Kit/
Tough-Thresh Small Seed Kit



716-041
Standard
Small Seed Kit



716-042
Tough-Thresh
Cereal Kit



716-043
Tough-Thresh
Corn/Soybean Kit



716-059
ThreshStart Kit*

*See Page 7 for
more details on
ThreshStart™ Kits



716-063
ThreshStart Kit*

ADDITIONAL KX7 COMPONENTS



BA1-001
Empty Frame



BB6-X04
MaxThresh™ Box



BB6-R05
MaxRound™ Box



BA1-L05
Front Lip

Contact our Sales Department to inquire about full kits or additional KXY components.



KX7 Concaves for Case IH: Flagship

MODELS: 7010AFX, 7120, 7230, 8010AFX, 8120, 8230, 9120, 9230

KONDEX

Description	Standard Configuration				Tough-Threshold Configuration				Threshold™			
	Full Kit	Individual Components			Full Kit	Individual Components			Kit	Individual Components		
	Part No.	Part No.	Qty	Installation	Part No.	Part No.	Qty	Installation	Part No.	Qty	Part No.	Installation
Cereals/ Small Seed	716-045	BA1-X55	1	LH Row 1	716-047	BA1-X55	1	LH Row 1	716-060	1	BA1-X55	LH Row 1
		BA1-X25	2	LH Rows 2-3		BA1-X25	3	LH Rows 2-4		1	BA1-X25	LH Row 2
		BA1-R25	1	LH Row 4		BA1-X45	1	RH Row 1		1	BA1-X45	RH Row 1
		BA1-X45	1	RH Row 1		BA1-X15	3	RH Rows 2-4		1	BA1-X15	RH Row 2
		BA1-X15	2	RH Rows 2-3								
		BA1-R15	1	RH Row 4								
Corn/ Soybeans	716-048	BA1-R55	1	LH Row 1	716-064	BA1-R55	1	LH Row 1	716-064	1	BA1-R55	LH Row 1
		BA1-R25	3	LH Rows 2-4		BA1-R25	3	LH Rows 2-4		1	BA1-R25	LH Row 2
		BA1-X45	1	RH Row 1		BA1-X45	1	RH Row 1		1	BA1-X45	RH Row 1
		BA1-X15	1	RH Row 2		BA1-X15	1	RH Row 2		1	BA1-X15	RH Row 2
		BA1-R15	2	RH Rows 3-4		BA1-R15	2	RH Rows 3-4				



716-045
Standard Cereal/
Small Seed Kit



716-047
Tough-Threshold
Cereal/Small Seed Kit



716-048
Tough-Threshold
Corn/Soybean Kit

*See Page 7 for more
details on Threshold™ Kits



716-060
Threshold Kit*



716-064
Threshold Kit*

ADDITIONAL KX7 COMPONENTS



BA1-041
Empty Front
Frame (RH)



BA1-051
Empty Front
Frame (LH)



BA1-011
Empty Mid/Rear
Frame (RH)



BA1-021
Empty Mid/Rear
Frame (LH)



BB6-X04
MaxThresh™
Box (Front)



BB6-R05
MaxRound™
Box (Front)



BB7-X04
MaxThresh™
Box (Mid/Rear)



BB7-R05
MaxRound™
Box (Mid/Rear)

Contact our Sales Department to inquire about full kits or additional KXY components.



KX7 Concaves for Case IH: Flagship (cont'd)

MODELS: 7240, 7250, 8240, 8250, 9240, 9250

KONDEX

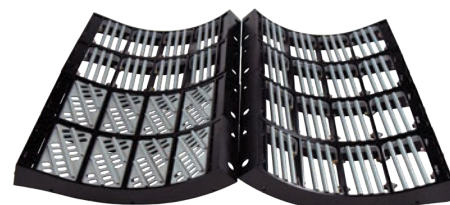
Description	Standard Configuration				Tough-Thresh Configuration				ThreshStart™			
	Full Kit	Individual Components			Full Kit	Individual Components			Kit	Individual Components		
	Part No.	Part No.	Qty	Installation	Part No.	Part No.	Qty	Installation	Part No.	Qty	Part No.	Installation
Cereals/ Small Seed	716-054	BA1-X25	3	LH Rows 1-3	716-056	BA1-X25	4	LH Rows 1-4	716-061	2	BA1-X25	LH Rows 1-2
		BA1-R25	1	LH Row 4		BA1-X15	4	RH Rows 1-4		2	BA1-X15	RH Rows 1-2
		BA1-X15	3	RH Rows 1-3								
		BA1-R15	1	RH Row 4								
Corn/ Soybeans	716-057	BA1-R25	4	LH Rows 1-4	716-065	BA1-R25	2	LH Rows 1-2	716-065	2	BA1-R25	LH Rows 1-2
		BA1-X15	2	RH Rows 1-2		BA1-X15	2	RH Rows 1-2		2	BA1-X15	RH Rows 1-2
		BA1-R15	2	RH Rows 3-4		BA1-R15	2	RH Rows 3-4				



716-054
Standard Cereal/
Small Seed Kit



716-056
Tough-Thresh
Cereal/Small Seed Kit



716-057
Tough-Thresh
Corn/Soybean Kit

*See Page 7 for more
details on ThreshStart™ Kits



716-061
ThreshStart Kit*



716-065
ThreshStart Kit*

ADDITIONAL KX7 COMPONENTS



BA1-011
Empty Frame (RH)



BA1-021
Empty Frame (LH)



BB7-X04
MaxThresh™
Box

BB7-R05
MaxRound™
Box

Contact our Sales Department to inquire about full kits or additional KXY components.



KX7 Concaves for John Deere

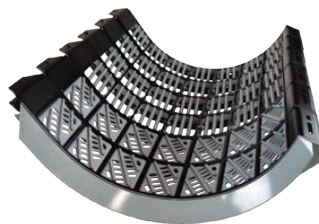
MODELS: S550/S650, S660, S670, S680, S690, S760, S770, S780, S790,
9650 STS, 9660 STS, 9670 STS, 9750 STS, 9760 STS, 9770 STS, 9860 STS, 9870 STS

KONDEX

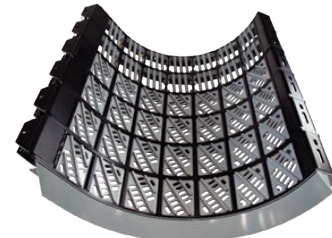
Description	Standard Configuration				Tough-Thresh Configuration				ThreshStart™			
	Full Kit	Individual Components			Full Kit	Individual Components			Kit	Individual Components		
	Part No.	Part No.	Qty	Installation	Part No.	Part No.	Qty	Installation	Part No.	Qty	Part No.	Installation
Cereals	716-049	BA2-L02	1	Front Lip	716-052	BA2-L02	1	Front Lip	716-062	1	BA2-L02	Front Lip
		BA2-X05	3	Rows 1 - 3		BA2-X05	4	Rows 1 - 4		2	BA2-X05	Rows 1 - 2
		BA2-R05	3	Rows 4 - 6		BA2-R05	2	Rows 5 - 6				
Small Seed	716-049	BA2-L02	1	Front Lip	716-073	BA2-L02	1	Front Lip	716-062	1	BA2-L02	Front Lip
		BA2-X05	3	Rows 1 - 3		BA2-X06	1	Row 1		2	BA2-X05	Rows 1 - 1
		BA2-R05	3	Rows 4 - 6		BA2-X05	2	Rows 2 - 3				
Corn/ Soybeans	716-053	BA2-L02	1	Front Lip	716-051	BA2-L02	1	Front Lip	716-066 (alternate: 716-062)	1	BA2-L02	Front Lip
		BA2-X05	1	Row 1		BA2-X05	2	Rows 1 - 2		1	BA2-X05	Row 1
		BA2-R05	5	Rows 2 - 6		BA2-R05	5	Rows 3 - 6		1	BA2-R05	Row 2



716-049
Standard Cereal Kit/
Tough-Thresh Small Seed Kit



716-051
Standard
Small Seed Kit



716-052
Tough-Thresh
Cereal Kit



716-053
Tough-Thresh
Corn/Soybean Kit



716-062
ThreshStart
Kit*

*See Page 7 for more
details on ThreshStart™ Kits



716-066
ThreshStart
Kit*



NEW
front position concave
for 716-073 kit

BA2-X06
MaxThresh™
Small Hole Concave

ADDITIONAL KX7 COMPONENTS



BA2-001
Empty Frame



BB6-X04
MaxThresh Box



BB6-R05
MaxRound™ Box



904-695
Wedge Lock



BA2-H01
Keyway Lock



BA2-L02
Front Lip

Contact our Sales Department to inquire about full kits or additional KXY components.



KX7 Concave Hardware Kits

Kondex Kit Part No.	Package Quantity	Description	Location Used	Machine Make
904-693	18 ea. of 920-819 6 ea. of 920-837 12 ea. of 920-838	3/8-16 Hex Flange Lock Nut 3/8-16 x 1" Hex Head Bolt 3/8-16 x 1.25" Hex Head Bolt	All Bolts for KX7 KX7 box-to-frame mounting KX7 box-to-box mounting	Case IH Mid Series John Deere
904-694	12 ea. of 920-819 6 ea. of 920-837 6 ea. of 920-838	3/8-16 Hex Flange Lock Nut 3/8-16 x 1" Hex Head Bolt 3/8-16 x 1.25" Hex Head Bolt	All Bolts for KX7 KX7 box-to-frame mounting KX7 box-to-box mounting	Case IH Flagship
904-724	24 ea. of 920-819 24 ea. of 920-851	3/8-16 Hex Flange Lock Nut 3/8-16 x 1" Flat Head Plow Bolt	All Bolts for KX7 KX7 box-to-frame mounting	Challenger Gleaner Massey Ferguson

Testimonials

"We've increased our harvest capacity, specifically in wheat, by like 25 to 30% – same machine, same headers, everything the same. I had John Deere combines set up exactly the same with OEM concaves, how I'd been running them for years. We had a better grain tank sample, much better grain tank sample. We were adding a half to three quarter... up to a mile an hour over OEM concaves. One of the first things you'll notice about the KX7 concaves are the build quality. The fit and finish are phenomenal. You can tell these guys care about what they make."

Emile Guedon | Farmer, Louisiana

"We chose the KX7 concaves because we were having some problems with the threshing. With the OEM concaves, we were getting quite a bit of rotor loss doing wheats, and our wheat is anywhere from 100 bushel to 120 bushel an acre. With the KX7 concaves, we were getting between a little over a half percent to a little under one percent loss, with more loss with the OEM. I've recommended to customers to use the KX7 concaves, especially in wheat. The customer can have less loss and more cash in his pocket."

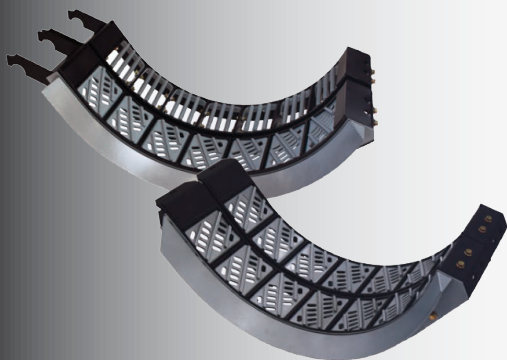
Dean Massart | Equipment Dealer, Wisconsin

"We were looking for ways to improve our threshing ability. We felt that our combine was kind of restricted as to how much capacity we could run because of horsepower. We felt that we weren't getting the material through the machine fast enough, and separation was probably a little bit of a problem. We did cut soft white wheat, hard red winter wheat, and some canola and mustard, and we were very happy with the performance. We felt we were at least getting a 12% better efficient combine just by using the KX7 system."

Bryan Jones | Farmer, Oregon



Scan to view
video testimonials



A Better Thresh Begins with ThreshStart™

Kondex KX7 ThreshStart™ concave kits are designed for those looking to begin gaining improved threshing and grain quality with minimal investment. ThreshStart kits include two rows of KX7 concaves for installation in the front, most critical threshing position. Standard concaves can be installed behind them. Additional KX7 assemblies will provide even greater results.

